

Heany Park Primary School (5345)

2006 School Level Report

Please check the data in this report. If, after comparing it with your own records, you deem it to be incorrect or incomplete, follow the directions on the web page below:

- <http://www.sofweb.vic.edu.au/standards>, then click on '**Accountability and Improvement**', then click on '**School Performance Reports**'.
-
-

Contents

	Page No.
Confidentiality	3
'Like' School Group chart	4
Assessment of Reading Prep to Year 2	5-6
Teacher Assessments against the VELs/CSF	7-15
AIM Reading	16
AIM Number	17
Teacher Assessment of Student Progress (PSD students)	18-19
Enrolments	20
Student Absence	21
Parent Opinion	22
Staff Opinion	23
Staff Sick Leave	24
Teaching Staff Retention	25
Bank Balances	26

Confidentiality

When reporting on the school's performance to the school community, care must be taken to avoid the disclosure of information that can directly or indirectly identify an individual. This may be a particular issue when reporting on the achievement of specific cohorts of students or the opinions of staff where there are small numbers.

In situations where confidentiality cannot be assured, schools may wish to report on the mean result or provide a written comment on school, year level or cohort performance.

Where the School Level Report is provided to school council members as part of any annual reporting process, or used for discussion on a school's performance, such as in consultation with the school community in the school self-evaluation process, it is important to remind school community members of their duty to only use this information for the purpose it was provided, and that the material must be kept confidential.

It is important to note that information that identifies an individual or can be used with other readily available information to identify a person is now protected by the *Information Privacy Act 2000* (<http://www.education.vic.gov.au/about/deptpolicies/informationprivacy.htm>).

'Like' School Group

School no: 5345

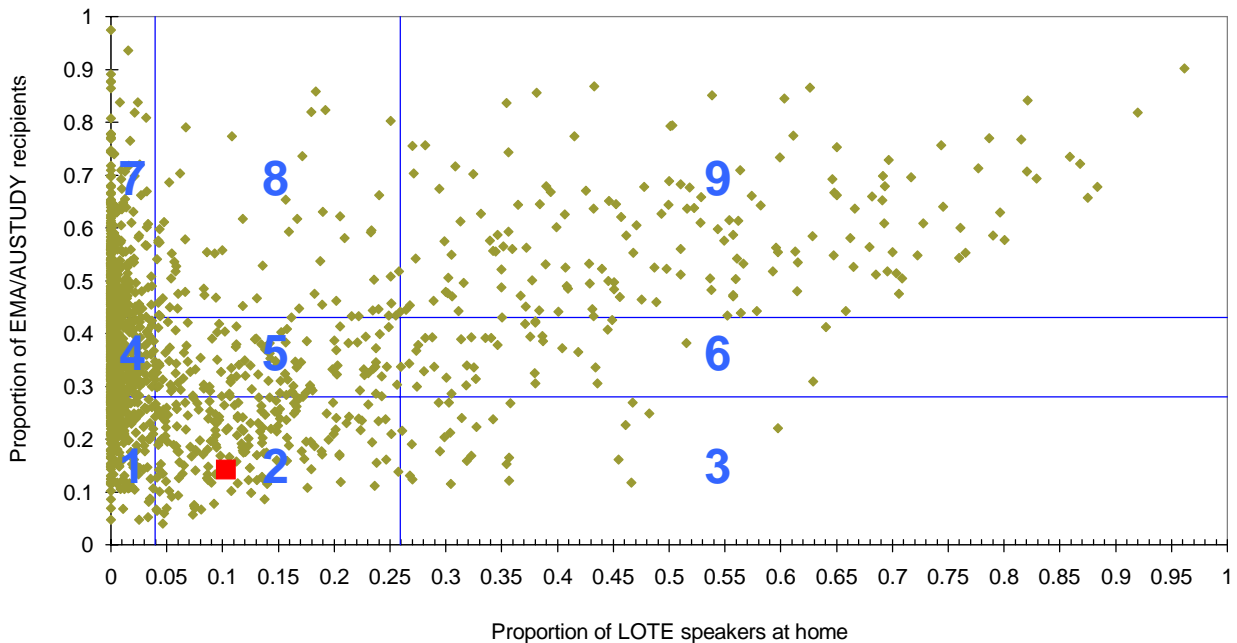
School name: Heany Park Primary School

Explanation: The first chart below plots the Like School Group position of all government schools offering Prep - Year 10. The second chart plots the Like School Group position of all government schools providing VCE. This school is shown as the red square on the relevant chart/s.

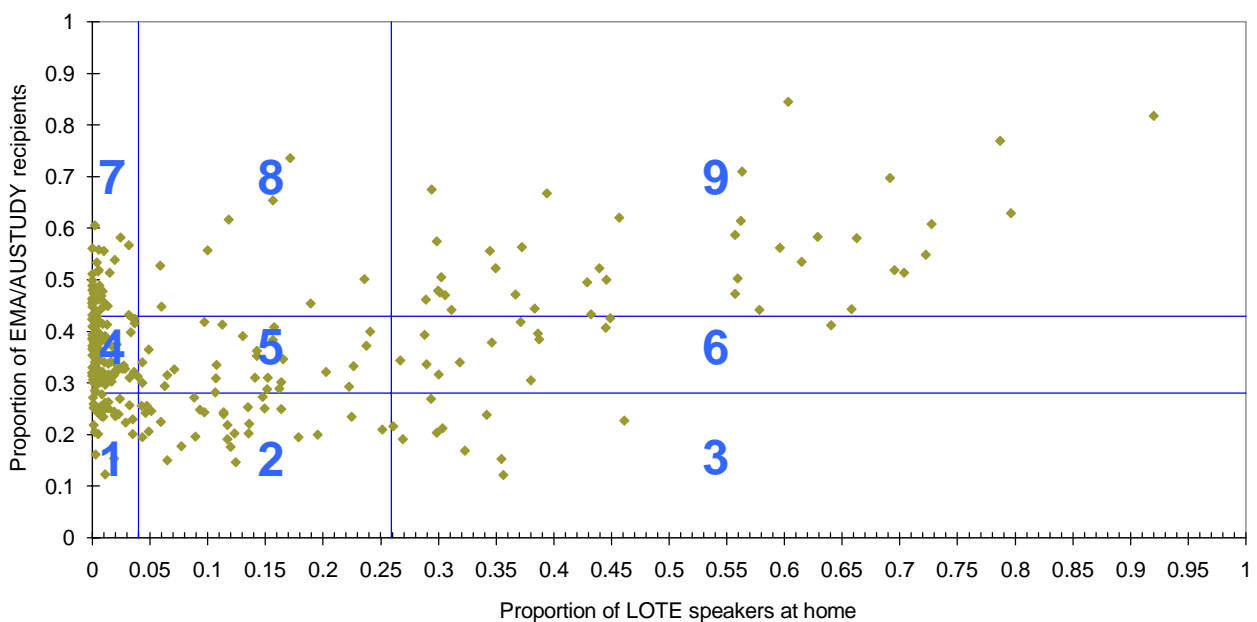
Note: EMA/AUSTUDY and LOTE proportions were not collected from 2004. 2003 proportions, and resulting LSGs, are therefore used from 2004.

	1999	2000	2001	2002	2003	2004	2005	2006
LSG:	2	2	2	2	2	2	2	2
EMA (3 year average):		0.131	0.135	0.137	0.142	0.142	0.142	0.142
LOTE (3 year average):		0.103	0.104	0.100	0.103	0.103	0.103	0.103

Like School Groups 2006, school plotted against Prep - Year 10 schools



Like School Groups 2006, school plotted against VCE providers



Assessment of Reading: Prep to Year 2

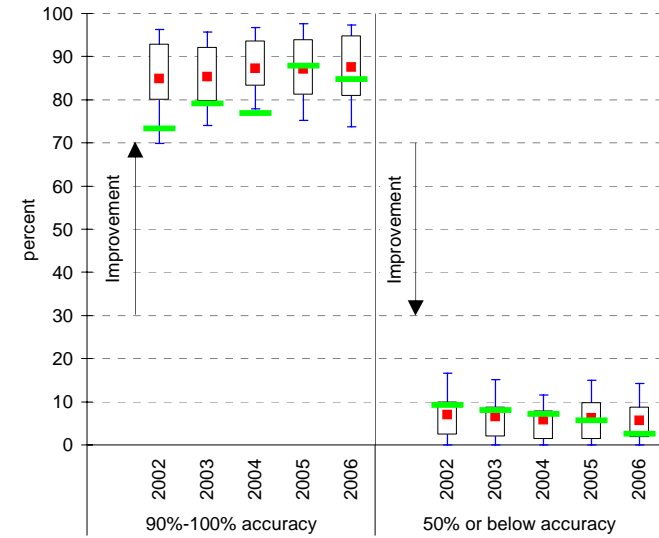
School no: 5345

School name: Heany Park Primary School

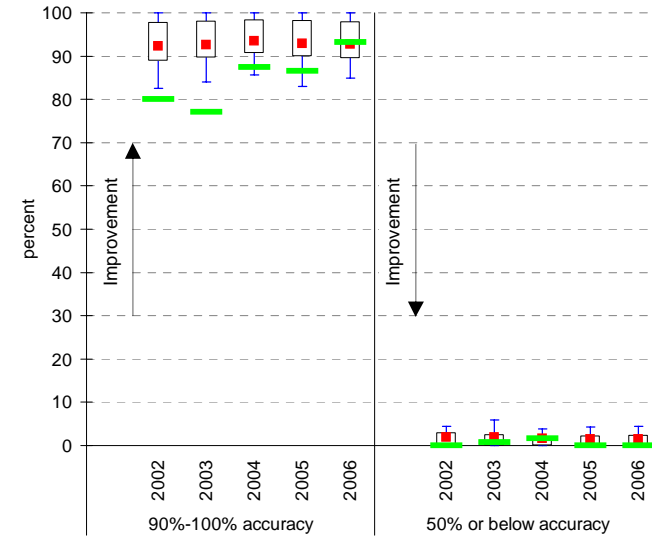
Explanation: Students' ability to read unsighted text is assessed at the end of each year.

Source of data: Data transmitted from school to DoE via an online web-form.

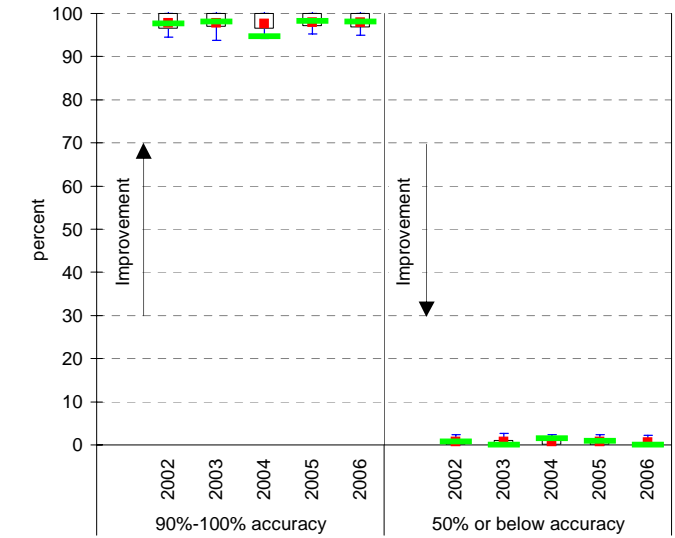
Year level: Prep
Text level: Level 5



Year level: Year 1
Text level: Level 15



Year level: Year 2
Text level: Level 20



Legend:

- LSG 90th percentile
- LSG 75th percentile
- LSG Mean
- LSG 25th percentile
- School
- LSG 10th percentile

LSG History

2002	2
2003	2
2004	2
2005	2
2006	2

Teacher Assessments against the VELS / CSF - Year levels Prep, 2, 4, 6 combined

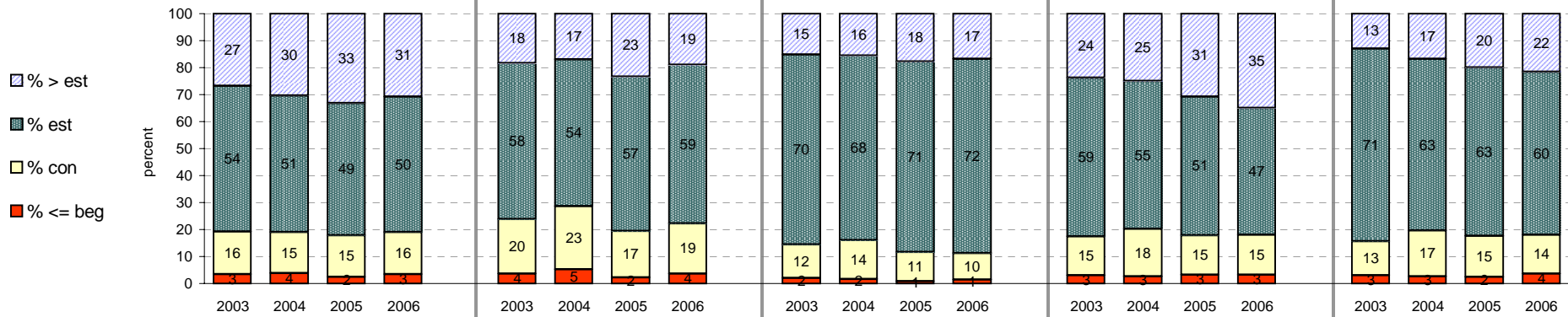
School no: 5345

School name: Heany Park Primary School

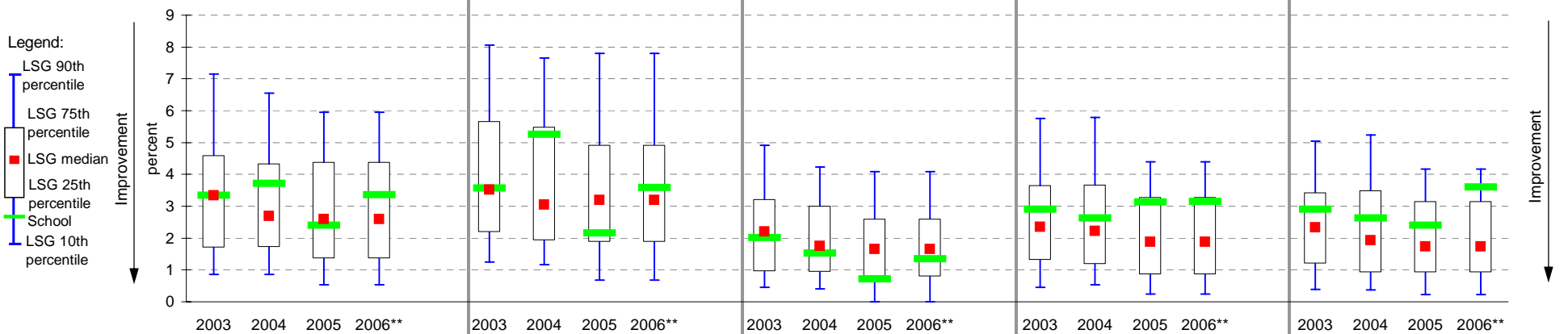
Source of data: Data retrieved electronically from CASES21 at time of rollover.

Explanation: Teacher assessments of student progress against the VELS / CSF.

		Reading					Writing					Speaking & Listening					Number					Measurement, Chance & Data*				
		total students	% > est	% est	% con	% <= beg	total students	% > est	% est	% con	% <= beg	total students	% > est	% est	% con	% <= beg	total students	% > est	% est	% con	% <= beg	total students	% > est	% est	% con	% <= beg
Yrs: Prep, 2, 4, 6 (combined)	2003	449	27	54	16	3	449	18	58	20	4	449	15	70	12	2	448	24	59	15	3	448	13	71	13	3
	2004	457	30	51	15	4	457	17	54	23	5	457	16	68	14	2	457	25	55	18	3	457	17	63	17	3
	2005	416	33	49	15	2	416	23	57	17	2	416	18	71	11	1	416	31	51	15	3	416	20	63	15	2
	2006	446	31	50	16	3	446	19	59	19	4	446	17	72	10	1	445	35	47	15	3	445	22	60	14	4



Percentage beginning or lower than expected level, compared to LSG benchmarks**



Notes: > est: better than established at expected level; est: established at expected level; con: consolidating at expected level; <= beg: beginning or lower than expected level

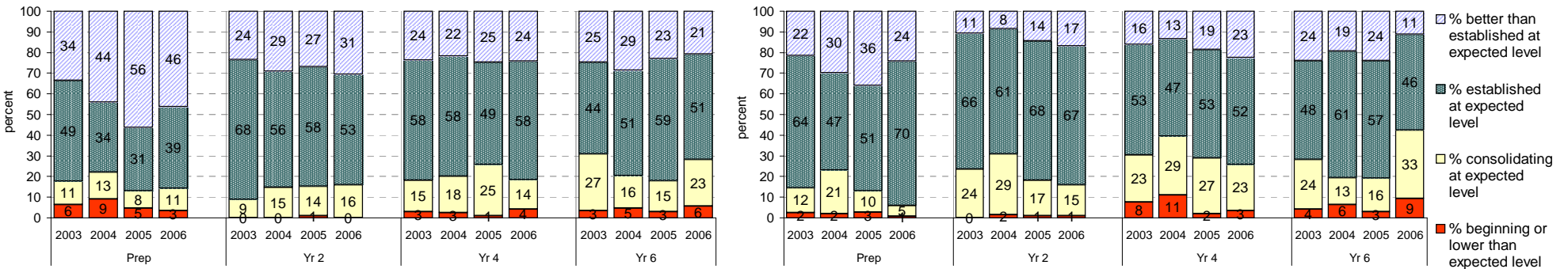
* pre-2006, the corresponding CSF strand for VELS Measurement, Chance and Data was Measurement.

** In 2006, a subset of schools assessed students against the VELS using Beginning, Consolidating, Established. 2005 benchmarks are therefore shown for 2006.

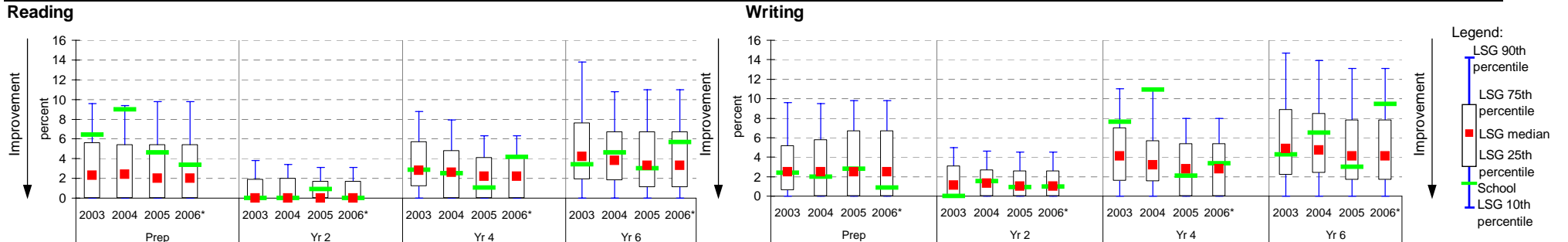
Teacher Assessments against the VELS / CSF - English (primary)

School no: 5345
School name: Heany Park Primary School
Source of data: Data retrieved electronically from CASES21 at time of rollover.
Explanation: Teacher assessments of student progress against the VELS / CSF.

Reading										Writing																																
			% better than established at expected		% established at expected		% consolidating at expected		% beginning or lower than expected		Benchmarks* (means)						% better than established at expected		% established at expected		% consolidating at expected		% beginning or lower than expected		Benchmarks* (means)																	
		total students	level	level	level	level	level	level	level	mean	LSG	State			total students	level	level	level	level	level	level	level	level	level	level	mean	LSG	State														
Prep	2003	125	34	49	11	6	1.04	1.10	1.03				Prep	2003	125	22	64	12	2	1.02	1.01	0.97																				
	2004	100	44	34	13	9	1.05	1.11	1.04					2004	100	30	47	21	2	1.02	1.02	0.98																				
	2005	108	56	31	8	5	1.13	1.12	1.05					2005	108	36	51	10	3	1.07	1.03	0.98																				
	2006	119	46	39	11	3	1.11	1.12	1.05					2006	119	24	70	5	1	1.06	1.03	0.98																				
Yr 2	2003	102	24	68	9	0	2.06	2.10	2.05				Yr 2	2003	102	11	66	24	0	1.96	2.00	1.96																				
	2004	130	29	56	15	0	2.07	2.11	2.06					2004	130	8	61	29	2	1.92	2.02	1.97																				
	2005	111	27	58	14	1	2.06	2.12	2.07					2005	111	14	68	17	1	1.98	2.02	1.97																				
	2006	101	31	53	16	0	2.08	2.12	2.07					2006	101	17	67	15	1	2.01	2.02	1.97																				
Yr 4	2003	105	24	58	15	3	3.00	3.04	2.97				Yr 4	2003	105	16	53	23	8	2.92	2.98	2.91																				
	2004	119	22	58	18	3	2.99	3.05	2.99					2004	119	13	47	29	11	2.87	2.99	2.93																				
	2005	97	25	49	25	1	3.00	3.06	2.99					2005	97	19	53	27	2	2.96	3.00	2.93																				
	2006	120	24	58	14	4	3.00	3.06	2.99					2006	120	23	52	23	3	2.96	3.00	2.93																				
Yr 6	2003	117	25	44	27	3	3.99	4.02	3.94				Yr 6	2003	117	24	48	24	4	3.99	3.97	3.88																				
	2004	108	29	51	16	5	4.03	4.03	3.95					2004	108	19	61	13	6	3.98	3.98	3.89																				
	2005	100	23	59	15	3	4.03	4.05	3.96					2005	100	24	57	16	3	4.02	4.00	3.90																				
	2006	106	21	51	23	6	3.95	4.05	3.96					2006	106	11	46	33	9	3.86	4.00	3.90																				



Percentage beginning or lower than expected level, compared to LSG benchmarks*



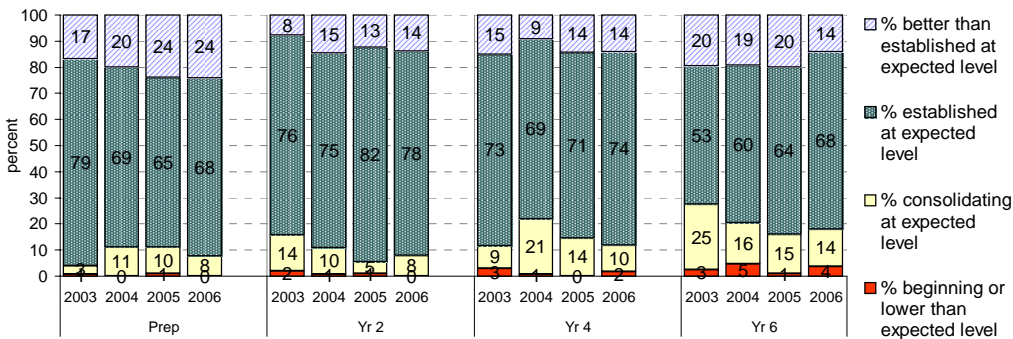
* Note: In 2006, a subset of schools assessed students against the VELS using Beginning, Consolidating, Established. 2005 benchmarks are therefore shown for 2006.

Teacher Assessments against the VELS / CSF - English (primary)

School no: 5345
School name: Heany Park Primary School
Source of data: Data retrieved electronically from CASES21 at time of rollover.
Explanation: Teacher assessments of student progress against the VELS / CSF.

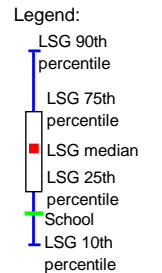
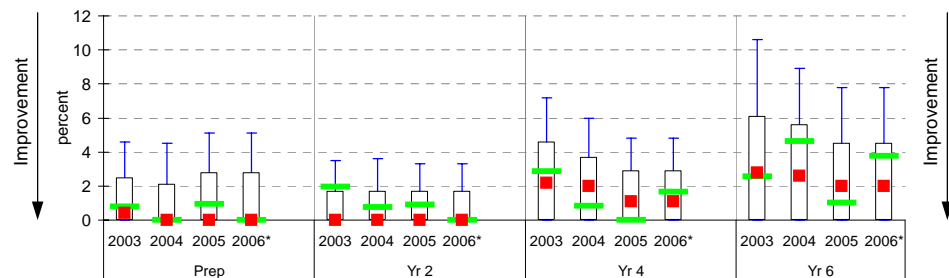
Speaking and Listening

	Year	total students	% better than established at expected level		% established at expected level		% consolidating at expected level		% beginning or lower than expected level		Benchmarks* (means)		
			level	level	level	level	mean	LSG	State				
Prep	2003	125	17	79	3	1	1.04	1.00	0.97				
	2004	100	20	69	11	0	1.03	1.01	0.97				
	2005	108	24	65	10	1	1.04	1.01	0.98				
	2006	119	24	68	8	0	1.06	1.01	0.98				
Yr 2	2003	102	8	76	14	2	1.97	2.02	1.99				
	2004	130	15	75	10	1	2.01	2.03	1.99				
	2005	111	13	82	5	1	2.02	2.03	1.99				
	2006	101	14	78	8	0	2.02	2.03	1.99				
Yr 4	2003	105	15	73	9	3	3.00	3.01	2.95				
	2004	119	9	69	21	1	2.96	3.02	2.96				
	2005	97	14	71	14	0	3.00	3.03	2.97				
	2006	120	14	74	10	2	2.99	3.03	2.97				
Yr 6	2003	117	20	53	25	3	3.97	4.01	3.94				
	2004	108	19	60	16	5	3.98	4.02	3.94				
	2005	100	20	64	15	1	4.02	4.03	3.95				
	2006	106	14	68	14	4	3.97	4.03	3.95				



Percentage beginning or lower than expected level, compared to LSG benchmarks*

Speaking and Listening



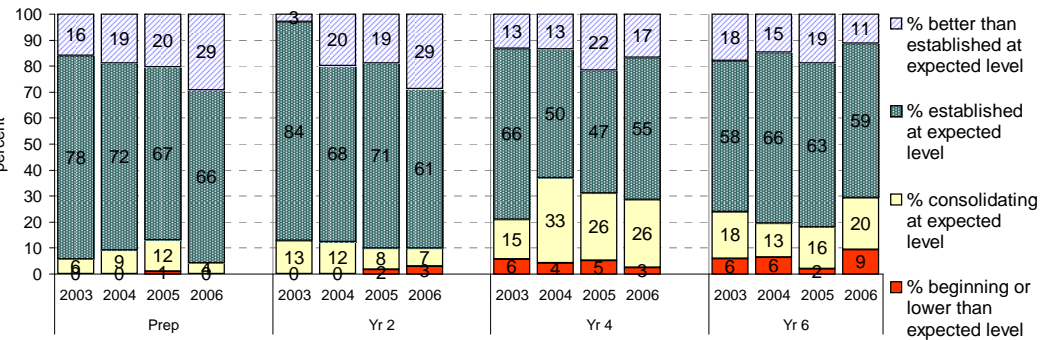
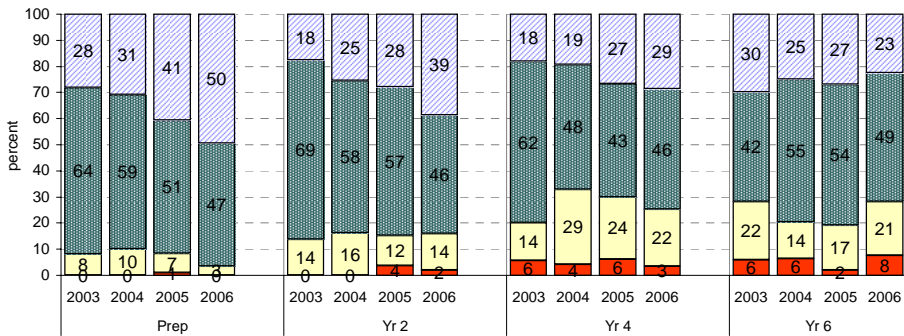
* Note: In 2006, a subset of schools assessed students against the VELS using Beginning, Consolidating, Established. 2005 benchmarks are therefore shown for 2006.

Teacher Assessments against the VELS / CSF - Mathematics (primary)

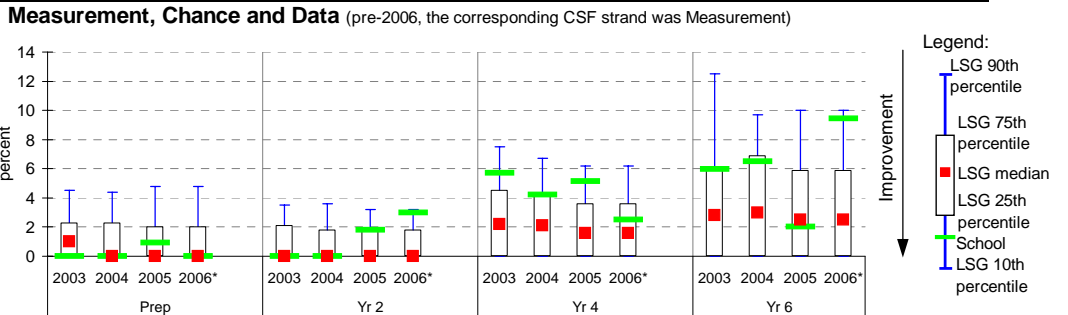
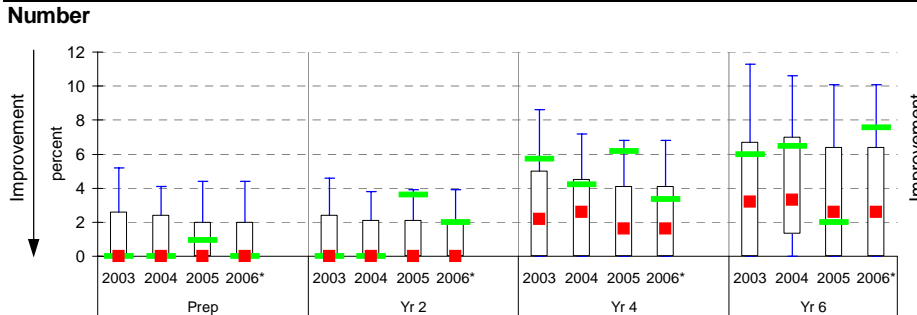
School no: 5345
School name: Heany Park Primary School
Source of data: Data retrieved electronically from CASES21 at time of rollover.
Explanation: Teacher assessments of student progress against the VELS / CSF.

Number		total students	% better than established at expected level				Benchmarks* (means)		
			level	level	level	level	mean	LSG	State
Prep	2003	124	28	64	8	0	1.07	1.04	1.01
	2004	100	31	59	10	0	1.07	1.06	1.02
	2005	108	41	51	7	1	1.10	1.06	1.02
	2006	119	50	47	3	0	1.16	1.06	1.02
Yr 2	2003	102	18	69	14	0	2.02	2.03	1.99
	2004	130	25	58	16	0	2.04	2.05	1.99
	2005	111	28	57	12	4	2.05	2.06	2.00
	2006	101	39	46	14	2	2.11	2.06	2.00
Yr 4	2003	105	18	62	14	6	2.97	3.01	2.95
	2004	119	19	48	29	4	2.94	3.03	2.97
	2005	97	27	43	24	6	2.98	3.05	2.97
	2006	119	29	46	22	3	3.00	3.05	2.97
Yr 6	2003	117	30	42	22	6	4.02	4.02	3.94
	2004	108	25	55	14	6	4.00	4.03	3.95
	2005	100	27	54	17	2	4.05	4.04	3.95
	2006	106	23	49	21	8	3.96	4.04	3.95

Measurement, Chance and Data		total students	% better than established at expected level				Benchmarks* (means)		
			level	level	level	level	mean	LSG	State
Prep	2003	124	16	78	6	0	1.04	1.01	0.98
	2004	100	19	72	9	0	1.03	1.03	0.99
	2005	108	20	67	12	1	1.02	1.02	0.99
	2006	119	29	66	4	0	1.08	1.02	0.99
Yr 2	2003	102	3	84	13	0	1.97	2.01	1.98
	2004	130	20	68	12	0	2.03	2.02	1.98
	2005	111	19	71	8	2	2.03	2.02	1.98
	2006	101	29	61	7	3	2.07	2.02	1.98
Yr 4	2003	105	13	66	15	6	2.94	3.00	2.94
	2004	119	13	50	33	4	2.91	3.02	2.96
	2005	97	22	47	26	5	2.95	3.03	2.96
	2006	119	17	55	26	3	2.95	3.03	2.96
Yr 6	2003	117	18	58	18	6	3.97	3.99	3.92
	2004	108	15	66	13	6	3.96	4.00	3.93
	2005	100	19	63	16	2	4.00	4.02	3.94
	2006	106	11	59	20	9	3.90	4.02	3.94



Percentage beginning or lower than expected level, compared to LSG benchmarks*



* Note: In 2006, a subset of schools assessed students against the VELS using Beginning, Consolidating, Established. 2005 benchmarks are therefore shown for 2006.

Teacher Assessments against the VELS / CSF - English (primary)

School no: 5345
School name: Heany Park Primary School
Source of data: Data retrieved electronically from CASES21 at time of rollover.
Explanation: Teacher assessments of student progress against the VELS / CSF.

LSG History	
2003	2
2004	2
2005	2
2006	2

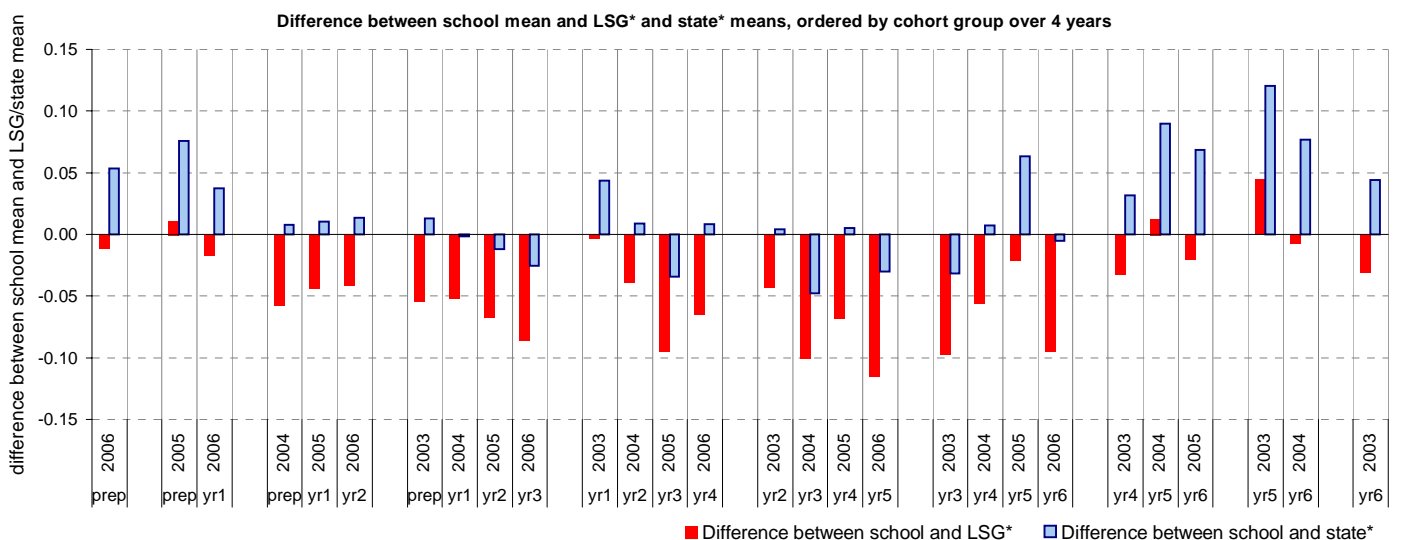
Reading

Year Level	Year	Total (1)	Assessed (2)	Level 1			Level 2			Level 3			Level 4			Level 5			Level 6			Level 6E			School mean	Benchmark* means		Diff. between school and ...	
				B	C	E	B	C	E	B	C	E	B	C	E	B	C	E	B	C	E	B	C	E		LSG	State	LSG	State
																												■	■
prep	2006	119	119	4	13	47	51	4																1.11	1.12	1.05	-0.01	0.05	
prep	2005	108	108	5	9	33	61																	1.13	1.12	1.05	0.01	0.08	
yr1	2006	103	103				7	75	18	3														1.72	1.74	1.69	-0.02	0.04	
prep	2004	100	100	9	13	34	43		1															1.05	1.11	1.04	-0.06	0.01	
yr1	2005	97	97				4	81	12															1.70	1.74	1.69	-0.04	0.01	
yr2	2006	101	101				16	54		21	10													2.08	2.12	2.07	-0.04	0.01	
prep	2003	125	125	8	14	61	38	4																1.04	1.10	1.03	-0.05	0.01	
yr1	2004	121	121			2	10	91	18															1.68	1.73	1.68	-0.05	0.00	
yr2	2005	111	111	1			16	64		20	10													2.06	2.12	2.07	-0.07	-0.01	
yr3	2006	105	105			1		5		18	69	12												2.60	2.69	2.63	-0.09	-0.03	
yr1	2003	132	132				16	79	37															1.72	1.72	1.68	0.00	0.04	
yr2	2004	130	130				19	73		30	8													2.07	2.11	2.06	-0.04	0.01	
yr3	2005	120	120				3	6		24	70	16	1											2.59	2.69	2.63	-0.09	-0.03	
yr4	2006	120	120			1			1	3	17	69	26	3										3.00	3.06	2.99	-0.06	0.01	
yr2	2003	102	102				9	69		21	3													2.06	2.10	2.05	-0.04	0.00	
yr3	2004	104	104				1	6		27	56	14												2.58	2.68	2.63	-0.10	-0.05	
yr4	2005	97	97							1	24	48	23	1										3.00	3.06	2.99	-0.07	0.01	
yr5	2006	92	92							1	1	3	22	65										3.54	3.66	3.57	-0.11	-0.03	
yr3	2003	121	121				1	5		26	78	10	1											2.59	2.69	2.63	-0.10	-0.03	
yr4	2004	119	119					1		2	21	69	26											2.99	3.05	2.99	-0.06	0.01	
yr5	2005	112	112							3	4		22	60	18	5								3.64	3.66	3.57	-0.02	0.06	
yr6	2006	106	106							2	4	24	54	21	1									3.95	4.05	3.96	-0.09	-0.01	
yr4	2003	105	105				2	1		16	61		22	3										3.00	3.04	2.97	-0.03	0.03	
yr5	2004	105	105							3	3		18	55	24	2								3.65	3.64	3.56	0.01	0.09	
yr6	2005	100	100							2	1	15	59	15	8									4.03	4.05	3.96	-0.02	0.07	
yr5	2003	106	106							3	6		14	57	16	8	2							3.68	3.63	3.56	0.04	0.12	
yr6	2004	108	108										5	17	55	27	3	1						4.03	4.03	3.95	-0.01	0.08	
yr6	2003	117	117								1	3	32	52	22	7								3.99	4.02	3.94	-0.03	0.04	

shading indicates, for even numbered year levels, consolidating or established at the expected VELS / CSF level, and, for the odd numbered year levels, beginning or consolidating at the expected VELS / CSF level, plus established at the level below.

- (1) Students in group
- (2) Total assessed

* Note: In 2006, a subset of schools assessed students against the VELS using Beginning, Consolidating, Established. 2005 benchmarks are therefore shown for 2006.



Teacher Assessments against the VELS / CSF - English (primary)

School no: 5345
School name: Heany Park Primary School
Source of data: Data retrieved electronically from CASES21 at time of rollover.
Explanation: Teacher assessments of student progress against the VELS / CSF.

LSG History	
2003	2
2004	2
2005	2
2006	2

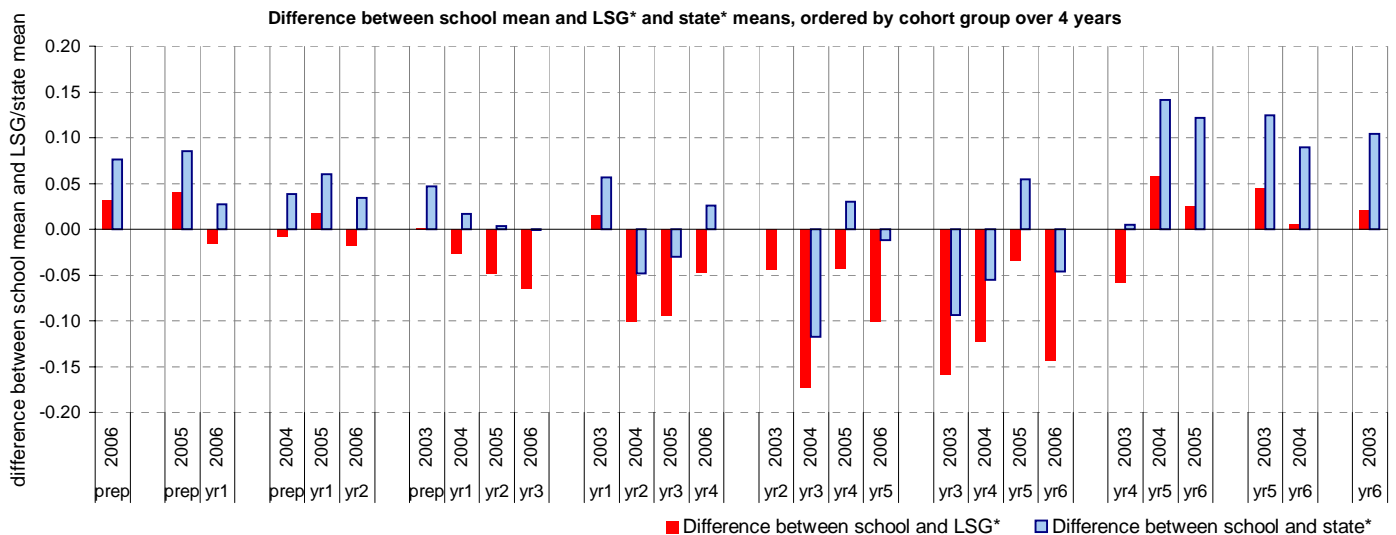
Writing

Year Level	Year	Total (1)	Assessed (2)	Level 1			Level 2			Level 3			Level 4			Level 5			Level 6			Level 6E			School mean	Benchmark* means		Diff. between school and ...	
				B	C	E	B	C	E	B	C	E	B	C	E	B	C	E	B	C	E	B	C	E		LSG	State	LSG	State
prep	2006	119	119	1	6	83	29																1.06	1.03	0.98	0.03	0.08		
prep	2005	108	108	3	11	55	39																1.07	1.03	0.98	0.04	0.09		
yr1	2006	103	103			1	13	84	5														1.64	1.65	1.61	-0.02	0.03		
prep	2004	100	100	2	21	47	30																1.02	1.02	0.98	-0.01	0.04		
yr1	2005	97	97				6	85	6														1.67	1.65	1.61	0.02	0.06		
yr2	2006	101	101				1	15	68	15	2												2.01	2.02	1.97	-0.02	0.03		
prep	2003	125	125	3	15	80	27																1.02	1.01	0.97	0.00	0.05		
yr1	2004	121	121	1			16	101	3														1.62	1.65	1.61	-0.03	0.02		
yr2	2005	111	111	1				19	75	16													1.98	2.02	1.97	-0.05	0.00		
yr3	2006	105	105			1			3	26	69	6											2.57	2.63	2.57	-0.06	0.00		
yr1	2003	132	132			1	18	97	16														1.66	1.64	1.60	0.01	0.06		
yr2	2004	130	130				2	38	79	11													1.92	2.02	1.97	-0.10	-0.05		
yr3	2005	120	120					3	12	27	66	11		1									2.54	2.63	2.57	-0.09	-0.03		
yr4	2006	120	120			1			2	1	27	62	27										2.96	3.00	2.93	-0.05	0.03		
yr2	2003	102	102					24	67	11													1.96	2.00	1.96	-0.04	0.00		
yr3	2004	104	104					2	12	43	40	7											2.46	2.63	2.57	-0.17	-0.12		
yr4	2005	97	97						2	26	51	17	1										2.96	3.00	2.93	-0.04	0.03		
yr5	2006	92	92						1	1	8	22	59	1									3.51	3.61	3.52	-0.10	-0.01		
yr3	2003	120	120					2	11	50	49	8											2.47	2.63	2.57	-0.16	-0.09		
yr4	2004	119	119					1		12	34	56	16										2.87	2.99	2.93	-0.12	-0.06		
yr5	2005	112	112							1	8	33	52	15	3								3.57	3.61	3.52	-0.03	0.05		
yr6	2006	106	106							1	1	8	35	49	12								3.86	4.00	3.90	-0.14	-0.05		
yr4	2003	105	105					1	1	6	24	56	15	2									2.92	2.98	2.91	-0.06	0.01		
yr5	2004	105	105							1	1	7	13	54	28	1							3.66	3.60	3.51	0.06	0.14		
yr6	2005	100	100									2	1	16	57	17	7						4.02	4.00	3.90	0.02	0.12		
yr5	2003	106	106							3	6	21	50	22	4								3.63	3.59	3.51	0.04	0.12		
yr6	2004	108	108									7	14	66	19	2							3.98	3.98	3.89	0.00	0.09		
yr6	2003	117	117									1	4	28	56	21	7						3.99	3.97	3.88	0.02	0.10		

shading indicates, for even numbered year levels, consolidating or established at the expected VELS / CSF level, and, for the odd numbered year levels, beginning or consolidating at the expected VELS / CSF level, plus established at the level below.

- (1) Students in group
- (2) Total assessed

* Note: In 2006, a subset of schools assessed students against the VELS using Beginning, Consolidating, Established. 2005 benchmarks are therefore shown for 2006.



Teacher Assessments against the VELS / CSF - English (primary)

School no: 5345
School name: Heany Park Primary School
Source of data: Data retrieved electronically from CASES21 at time of rollover.
Explanation: Teacher assessments of student progress against the VELS / CSF.

LSG History	
2003	2
2004	2
2005	2
2006	2

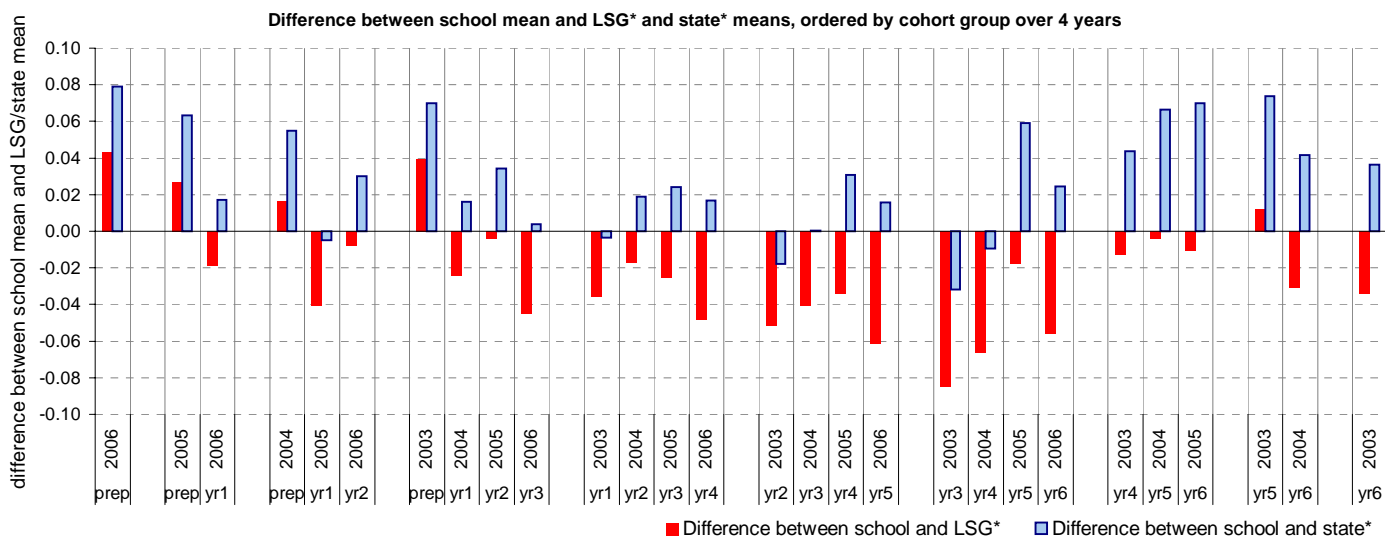
Speaking and Listening

Year Level	Year	Total (1)	Assessed (2)	Level 1			Level 2			Level 3			Level 4			Level 5			Level 6			Level 6E			School mean	Benchmark* means		Diff. between school and ...	
				B	C	E	B	C	E	B	C	E	B	C	E	B	C	E	B	C	E	B	C	E		LSG	State	LSG	State
prep	2006	119	119		9	81	29																1.06	1.01	0.98	0.04	0.08		
prep	2005	108	108	1	11	70	26																1.04	1.01	0.98	0.03	0.06		
yr1	2006	103	103				8	93	2														1.65	1.67	1.63	-0.02	0.02		
prep	2004	100	100		11	69	20																1.03	1.01	0.97	0.02	0.05		
yr1	2005	97	97				12	85															1.63	1.67	1.63	-0.04	0.00		
yr2	2006	101	101				8	79	14														2.02	2.03	1.99	-0.01	0.03		
prep	2003	125	125	1	4	99	21																1.04	1.00	0.97	0.04	0.07		
yr1	2004	121	121				10	108	3														1.65	1.67	1.63	-0.02	0.02		
yr2	2005	111	111	1			5	91	10	4													2.02	2.03	1.99	0.00	0.03		
yr3	2006	105	105			1			2	12	86	4											2.62	2.66	2.61	-0.04	0.00		
yr1	2003	132	132				27	94	11														1.63	1.66	1.63	-0.04	0.00		
yr2	2004	130	130				1	13	97	19													2.01	2.03	1.99	-0.02	0.02		
yr3	2005	120	120							22	89	8	1										2.64	2.66	2.61	-0.02	0.02		
yr4	2006	120	120	1					1		12	89	17										2.99	3.03	2.97	-0.05	0.02		
yr2	2003	102	102				2	14	78	8													1.97	2.02	1.99	-0.05	-0.02		
yr3	2004	104	104				1	2	14	84	3												2.61	2.65	2.61	-0.04	0.00		
yr4	2005	97	97							14	69	14											3.00	3.03	2.97	-0.03	0.03		
yr5	2006	92	92							2	18	72											3.59	3.65	3.57	-0.06	0.02		
yr3	2003	121	121				2	36	77	6													2.57	2.66	2.61	-0.08	-0.03		
yr4	2004	119	119				1	25	82	11													2.96	3.02	2.96	-0.07	-0.01		
yr5	2005	112	112						3	23	70	15	1										3.63	3.65	3.57	-0.02	0.06		
yr6	2006	106	106							4	15	72	15										3.97	4.03	3.95	-0.06	0.02		
yr4	2003	105	105				1	2	9	77	16												3.00	3.01	2.95	-0.01	0.04		
yr5	2004	105	105					1	1	14	82	7											3.63	3.63	3.56	0.00	0.07		
yr6	2005	100	100							1	15	64	17	3									4.02	4.03	3.95	-0.01	0.07		
yr5	2003	106	106						4	16	74	11	1										3.63	3.62	3.56	0.01	0.07		
yr6	2004	108	108							5	17	65	20	1									3.98	4.02	3.94	-0.03	0.04		
yr6	2003	117	117							3	29	62	22	1									3.97	4.01	3.94	-0.03	0.04		

shading indicates, for even numbered year levels, consolidating or established at the expected VELS / CSF level, and, for the odd numbered year levels, beginning or consolidating at the expected VELS / CSF level, plus established at the level below.

- (1) Students in group
- (2) Total assessed

* Note: In 2006, a subset of schools assessed students against the VELS using Beginning, Consolidating, Established. 2005 benchmarks are therefore shown for 2006.



Teacher Assessments against the VELS / CSF - Mathematics (primary)

School no: 5345
School name: Heany Park Primary School
Source of data: Data retrieved electronically from CASES21 at time of rollover.
Explanation: Teacher assessments of student progress against the VELS / CSF.

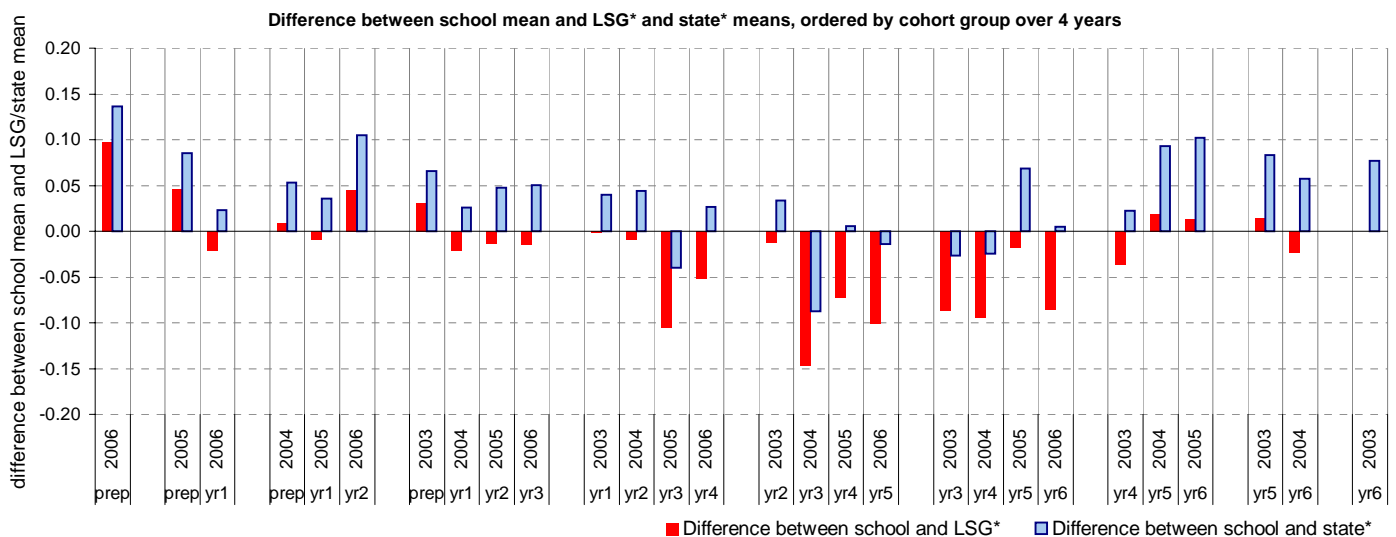
LSG History	
2003	2
2004	2
2005	2
2006	2

Number

Year Level	Year	Total (1)	Assessed (2)	Level 1			Level 2			Level 3			Level 4			Level 5			Level 6			Level 6E			School mean	Benchmark* means		Diff. between school and ...	
				B	C	E	B	C	E	B	C	E	B	C	E	B	C	E	B	C	E	B	C	E		LSG	State	LSG	State
prep	2006	119	119		4	56	58	1															1.16	1.06	1.02	0.10	0.14		
prep	2005	108	108	1	8	55	44																1.10	1.06	1.02	0.05	0.09		
yr1	2006	102	102			3	10	78	11														1.65	1.67	1.63	-0.02	0.02		
prep	2004	100	100		10	59	31																1.07	1.06	1.02	0.01	0.05		
yr1	2005	97	97				11	76	10														1.67	1.67	1.63	-0.01	0.04		
yr2	2006	101	101				2	14	46	28	11												2.11	2.06	2.00	0.04	0.10		
prep	2003	124	124		10	79	33	2															1.07	1.04	1.01	0.03	0.07		
yr1	2004	121	121		1		18	88	12	2													1.65	1.68	1.63	-0.02	0.03		
yr2	2005	111	111	1			3	13	63	22	9												2.05	2.06	2.00	-0.01	0.05		
yr3	2006	105	105			1	2	1	14	68	15	4											2.66	2.67	2.61	-0.01	0.05		
yr1	2003	132	132				18	100	13	1													1.66	1.66	1.62	0.00	0.04		
yr2	2004	130	130				21	76	30	3													2.04	2.05	1.99	-0.01	0.04		
yr3	2005	120	120				4	6	25	75	8	2											2.57	2.67	2.61	-0.10	-0.04		
yr4	2006	119	119					1	3	26	55	34											3.00	3.05	2.97	-0.05	0.03		
yr2	2003	102	102				14	70	16	2													2.02	2.03	1.99	-0.01	0.03		
yr3	2004	104	104				2	5	34	61	2												2.51	2.66	2.60	-0.15	-0.09		
yr4	2005	97	97					1	5	23	42	23	3										2.98	3.05	2.97	-0.07	0.01		
yr5	2006	92	92						1	4	21	66											3.55	3.65	3.57	-0.10	-0.01		
yr3	2003	121	120				4	33	78	5													2.57	2.65	2.59	-0.09	-0.03		
yr4	2004	119	119					5	34	57	23												2.94	3.03	2.97	-0.09	-0.02		
yr5	2005	112	112							6	24	57	25										3.63	3.65	3.57	-0.02	0.07		
yr6	2006	106	106							2	6	22	52	22	2								3.96	4.04	3.95	-0.08	0.00		
yr4	2003	105	105				2	4	15	65	16	3											2.97	3.01	2.95	-0.04	0.02		
yr5	2004	105	105						3	3	14	63	20	2									3.65	3.63	3.56	0.02	0.09		
yr6	2005	100	100								2	17	54	17	10								4.05	4.04	3.95	0.01	0.10		
yr5	2003	106	106						3	4	20	59	14	6									3.63	3.62	3.55	0.01	0.08		
yr6	2004	108	108							1	6	15	59	24	2	1							4.00	4.03	3.95	-0.02	0.06		
yr6	2003	117	117								1	6	26	49	24	10	1						4.02	4.02	3.94	0.00	0.08		

shading indicates, for even numbered year levels, consolidating or established at the expected VELS / CSF level, and, for the odd numbered year levels, beginning or consolidating at the expected VELS / CSF level, plus established at the level below.

- (1) Students in group
 (2) Total assessed
- * Note: In 2006, a subset of schools assessed students against the VELS using Beginning, Consolidating, Established. 2005 benchmarks are therefore shown for 2006.



Teacher Assessments against the VELS / CSF - Mathematics (primary)

School no: 5345
School name: Heany Park Primary School
Source of data: Data retrieved electronically from CASES21 at time of rollover.
Explanation: Teacher assessments of student progress against the VELS / CSF.

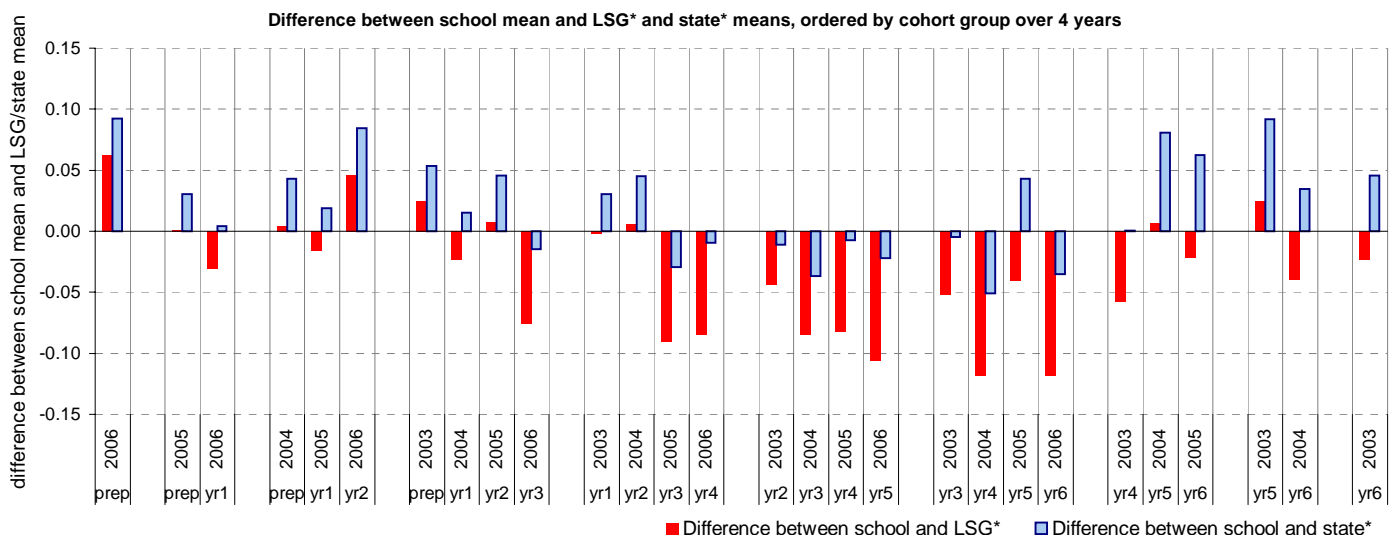
LSG History	
2003	2
2004	2
2005	2
2006	2

Measurement, Chance and Data (pre-2006, the corresponding CSF strand was Measurement)

Year Level	Year	Total (1)	Assessed (2)	Level 1			Level 2			Level 3			Level 4			Level 5			Level 6			Level 6E			School mean	Benchmark* means		Diff. between school and ...	
				B	C	E	B	C	E	B	C	E	B	C	E	B	C	E	B	C	E	B	C	E		LSG	State	LSG	State
prep	2006	119	119		5	79	35																1.08	1.02	0.99	0.06	0.09		
prep	2005	108	108	1	13	72	22																1.02	1.02	0.99	0.00	0.03		
yr1	2006	103	103			2	10	90	1														1.63	1.66	1.62	-0.03	0.00		
prep	2004	100	100		9	72	19																1.03	1.03	0.99	0.00	0.04		
yr1	2005	97	97				9	87	1														1.64	1.66	1.62	-0.02	0.02		
yr2	2006	101	101				3	7	62	24	5												2.07	2.02	1.98	0.05	0.08		
prep	2003	124	124		7	97	19	1															1.04	1.01	0.98	0.02	0.05		
yr1	2004	121	121			1	12	105	3														1.64	1.66	1.62	-0.02	0.02		
yr2	2005	111	111	1			1	9	79	16	5												2.03	2.02	1.98	0.01	0.05		
yr3	2006	105	105			1		1	4	16	78	5											2.58	2.66	2.60	-0.08	-0.01		
yr1	2003	132	132				15	109	8														1.65	1.65	1.62	0.00	0.03		
yr2	2004	130	130					16	88	25	1												2.03	2.02	1.98	0.01	0.04		
yr3	2005	120	120					6	31	77	5	1											2.57	2.66	2.60	-0.09	-0.03		
yr4	2006	119	119					1	2	31	65	20											2.95	3.03	2.96	-0.08	-0.01		
yr2	2003	102	102				13	86	3														1.97	2.01	1.98	-0.04	-0.01		
yr3	2004	104	104				1	5	21	77													2.56	2.64	2.60	-0.08	-0.04		
yr4	2005	97	97					1	4	25	46	20	1										2.95	3.03	2.96	-0.08	-0.01		
yr5	2006	92	92						2	2	26	62											3.54	3.64	3.56	-0.11	-0.02		
yr3	2003	120	119				1	26	92														2.59	2.64	2.59	-0.05	0.00		
yr4	2004	119	119					1	4	39	59	16											2.91	3.02	2.96	-0.12	-0.05		
yr5	2005	112	112						2	5	19	73	13										3.60	3.64	3.56	-0.04	0.04		
yr6	2006	106	106						1	1	8	21	63	11	1								3.90	4.02	3.94	-0.12	-0.03		
yr4	2003	105	105				1	1	4	16	69	13	1										2.94	3.00	2.94	-0.06	0.00		
yr5	2004	105	105						2	2	18	66	17										3.63	3.63	3.55	0.01	0.08		
yr6	2005	100	100							1	1	16	63	17	2								4.00	4.02	3.94	-0.02	0.06		
yr5	2003	106	106							2	21	69	13	1									3.64	3.61	3.54	0.02	0.09		
yr6	2004	108	108								7	14	71	16									3.96	4.00	3.93	-0.04	0.03		
yr6	2003	117	117								7	21	68	19	1	1							3.97	3.99	3.92	-0.02	0.05		

shading indicates, for even numbered year levels, consolidating or established at the expected VELS / CSF level, and, for the odd numbered year levels, beginning or consolidating at the expected VELS / CSF level, plus established at the level below.

- (1) Students in group
 (2) Total assessed
- * Note: In 2006, a subset of schools assessed students against the VELS using Beginning, Consolidating, Established. 2005 benchmarks are therefore shown for 2006.



AIM Year 3 & 5: Reading ¹

School no: 5345

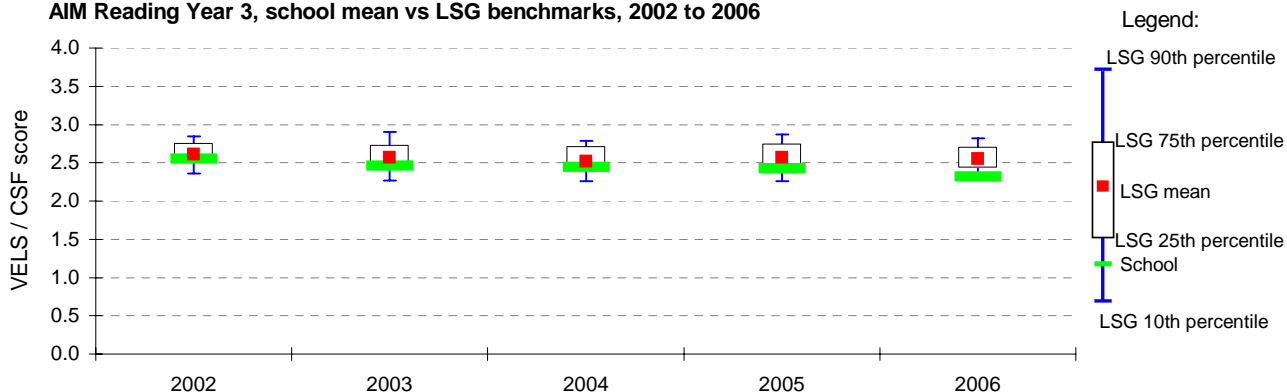
School name: Heany Park Primary School

Explanation: The Achievement Improvement Monitor (AIM) is a statewide assessment program conducted each year for students in Years 3, 5, 7 and 9.

Source of data: Victorian Curriculum and Assessment Authority.

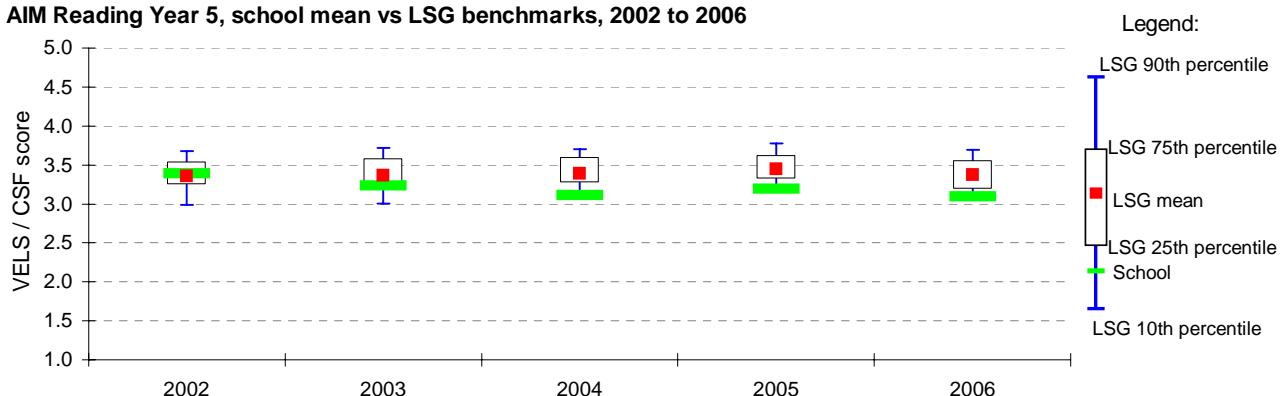
Year	School						LSG					State	
	student participation ² (%)	students participated (n)	VELS / CSF				10th ptile*	25th ptile*	75th ptile*	90th ptile*			
			Level 1 (n)	Level 1 (%)	Level 4/5 (n)	Level 4/5 (%)					mean		
2002	92	104	3	3	29	28	2.6	2.4	2.5	2.6	2.8	2.8	2.4
2003	93	113	4	4	32	28	2.5	2.3	2.4	2.6	2.7	2.9	2.3
2004	100	99	2	2	19	19	2.4	2.3	2.4	2.5	2.7	2.8	2.3
2005	91	115	9	8	33	29	2.4	2.3	2.5	2.6	2.7	2.9	2.4
2006	89	97	6	6	19	20	2.3	2.3	2.4	2.6	2.7	2.8	2.3

AIM Reading Year 3, school mean vs LSG benchmarks, 2002 to 2006



Year	School						LSG					State	
	student participation ² (%)	students participated (n)	VELS / CSF				10th ptile*	25th ptile*	75th ptile*	90th ptile*			
			Level 2 (n)	Level 2 (%)	Level 5/6 (n)	Level 5/6 (%)					mean		
2002	98	125	3	2	36	29	3.4	3.0	3.2	3.4	3.5	3.7	3.1
2003	92	98	2	2	19	19	3.2	3.0	3.2	3.4	3.6	3.7	3.2
2004	91	96	5	5	9	9	3.1	3.1	3.3	3.4	3.6	3.7	3.2
2005	91	104	7	7	20	19	3.2	3.2	3.3	3.5	3.6	3.8	3.2
2006	91	84	4	5	13	15	3.1	3.1	3.2	3.4	3.6	3.7	3.1

AIM Reading Year 5, school mean vs LSG benchmarks, 2002 to 2006



Year 3 / Year 5 matched cohort ³	Yr 5 students participated (n)	Students in matched cohort (n)	Matched cohort (%)	Average growth (VELS / CSF units)	
				Complete school	Matched cohort
Yr3 2002 / Yr5 2004	96	85	89%	0.6	0.6
Yr3 2003 / Yr5 2005	104	88	85%	0.7	0.7
Yr3 2004 / Yr5 2006	84	76	90%	0.7	0.6

Notes: * distribution of school means
mean score of students

¹ for more detailed AIM data, refer to your school's 2006 AIM Data Service website at <http://aimds.vcaa.vic.edu.au>.

² % student participation = (students who participated in AIM / Feb enrolments) * 100

³ students who participated in AIM at the same school in Years 3 and 5 are called the matched cohort

AIM Year 3 & 5: Number ¹

School no: 5345

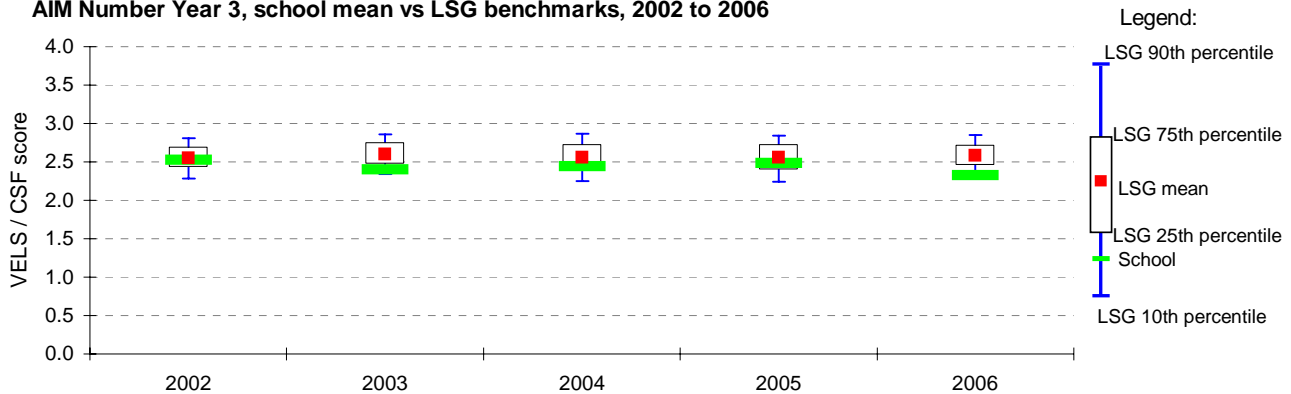
School name: Heany Park Primary School

Explanation: The Achievement Improvement Monitor (AIM) is a statewide assessment program conducted each year for students in Years 3, 5, 7 and 9.

Source of data: Victorian Curriculum and Assessment Authority.

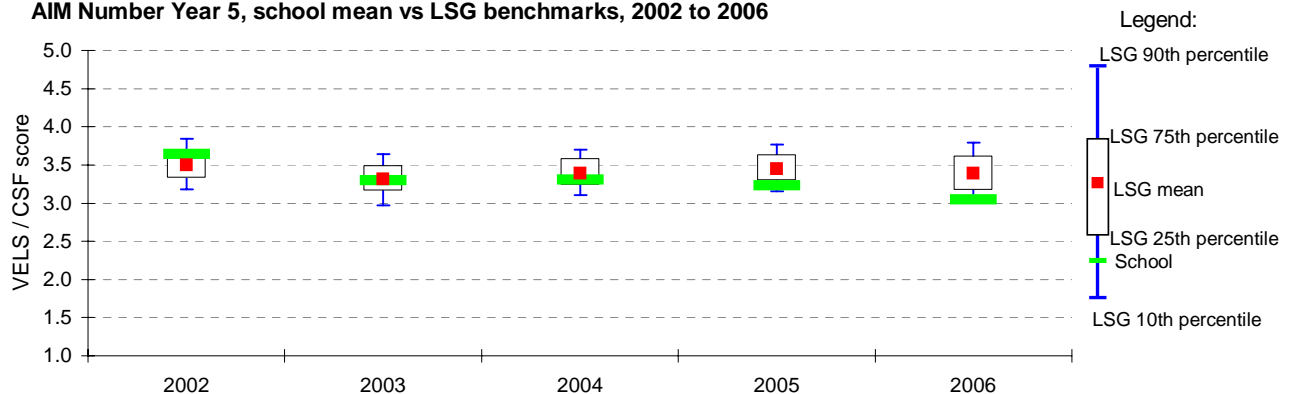
Year	School		VELS / CSF					LSG					State
	student participation ² (%)	students participated (n)	Level 1		Level 4/5		mean	10th ptile*	25th ptile*	75th ptile*	90th ptile*		
			(n)	(%)	(n)	(%)							
2002	90	102	1	1	29	28	2.5	2.3	2.4	2.5	2.7	2.8	2.4
2003	92	112	1	1	24	21	2.4	2.3	2.5	2.6	2.7	2.9	2.4
2004	102	101	2	2	18	18	2.4	2.3	2.4	2.6	2.7	2.9	2.4
2005	94	119	6	5	32	27	2.5	2.2	2.4	2.6	2.7	2.8	2.4
2006	85	93	4	4	19	20	2.3	2.3	2.5	2.6	2.7	2.9	2.4

AIM Number Year 3, school mean vs LSG benchmarks, 2002 to 2006



Year	School		VELS / CSF					LSG					State
	student participation ² (%)	students participated (n)	Level 2		Level 5/6		mean	10th ptile*	25th ptile*	75th ptile*	90th ptile*		
			(n)	(%)	(n)	(%)							
2002	99	126	2	2	45	36	3.6	3.2	3.3	3.5	3.7	3.8	3.3
2003	92	98	3	3	23	23	3.3	3.0	3.2	3.3	3.5	3.6	3.1
2004	92	98	1	1	19	19	3.3	3.1	3.2	3.4	3.6	3.7	3.2
2005	90	103	3	3	21	20	3.2	3.2	3.3	3.5	3.6	3.8	3.2
2006	88	81	3	4	3	4	3.0	3.0	3.2	3.4	3.6	3.8	3.2

AIM Number Year 5, school mean vs LSG benchmarks, 2002 to 2006



Year 3 / Year 5 matched cohort ³	Yr5 students participated (n)	Students in matched cohort (n)	Matched cohort (%)	Average growth (VELS / CSF units)	
				Complete school	Matched cohort
Yr3 2002 / Yr5 2004	98	85	87%	0.8	0.8
Yr3 2003 / Yr5 2005	103	87	84%	0.8	0.8
Yr3 2004 / Yr5 2006	81	73	90%	0.6	0.5

Notes: * distribution of school means

mean score of students

¹ for more detailed AIM data, refer to your school's 2006 AIM Data Service website at <http://aimds.vcaa.vic.edu.au>.

² % student participation = (students who participated in AIM / Feb enrolments) * 100

³ students who participated in AIM at the same school in Years 3 and 5 are called the matched cohort

Teacher Assessment of Student Progress (PSD students)

School no: 5345

School name: Heany Park Primary School

Explanation: Teachers assess their students' progress against the 8 VELS Domains / CSF KLAs using a 6-point scale (students in special schools and those who cannot be assessed against the VELS / CSF).

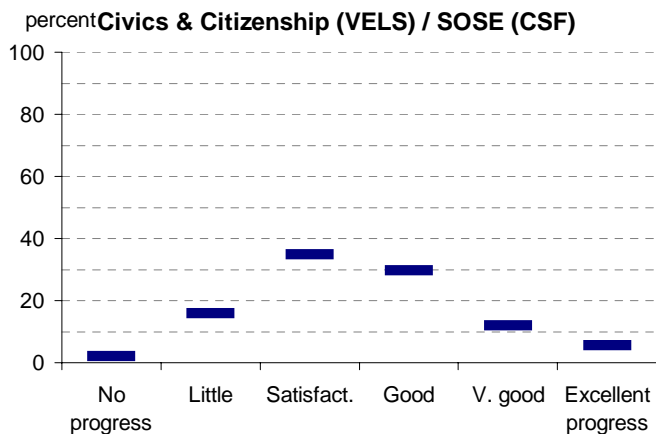
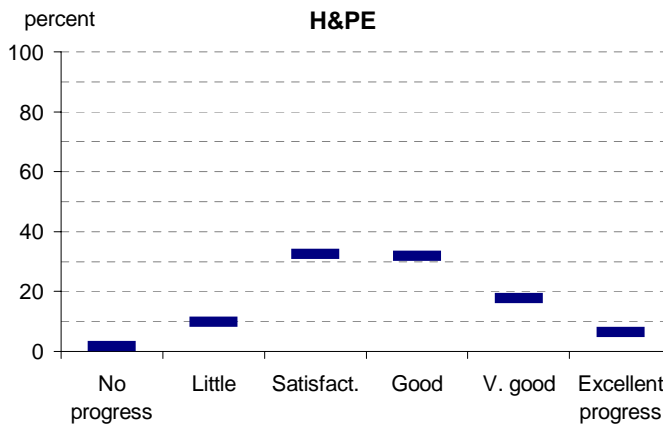
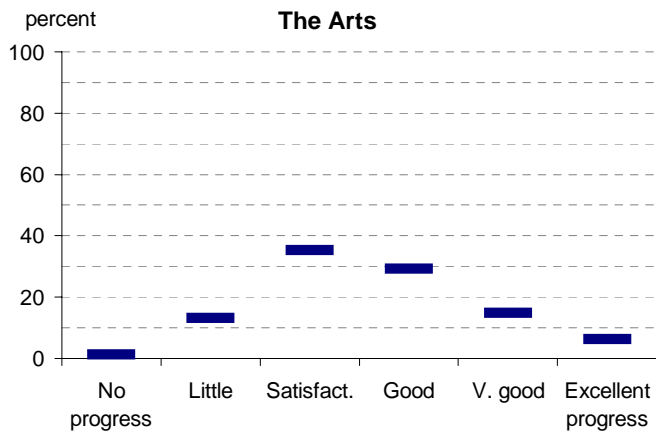
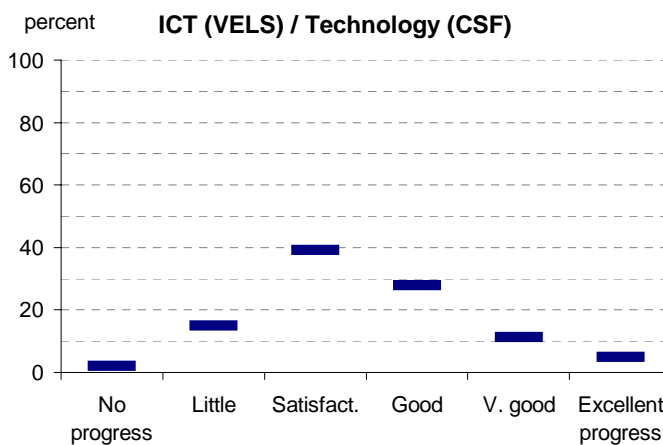
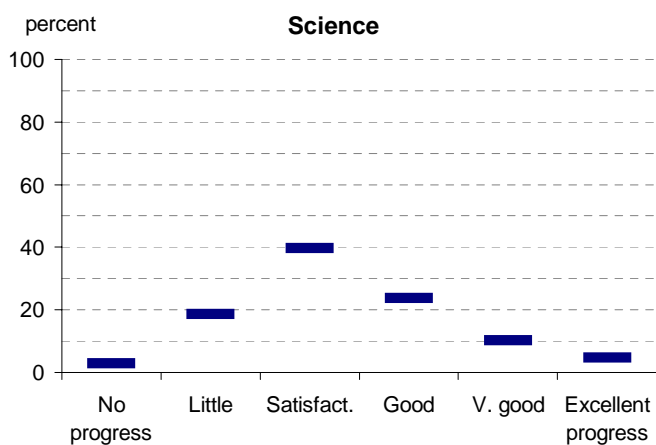
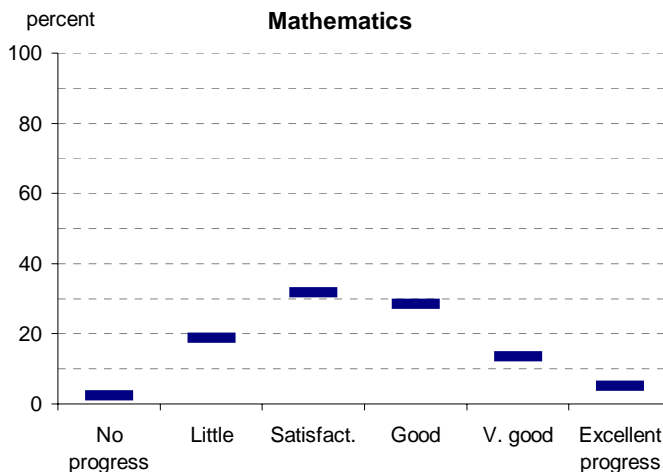
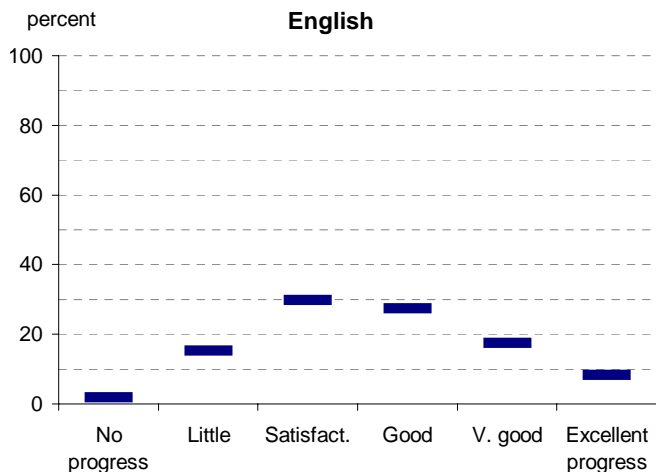
Source of data: Data transmitted from school to DoE via an online web-form.

	No progress (%)	Little progress (%)	Satisfactory progress (%)	Good progress (%)	Very good progress (%)	Excellent progress (%)	Total students assessed ¹ (no.)
2002 (by CSF KLA)							
English							
Mathematics							
Science							
Technology							
The Arts							
H&PE							
SOSE							
2003 (by CSF KLA)							
English							
Mathematics							
Science							
Technology							
The Arts							
H&PE							
SOSE							
2004 (by CSF KLA)							
English							
Mathematics							
Science							
Technology							
The Arts							
H&PE							
SOSE							
2005 (by CSF KLA)							
English							
Mathematics							
Science							
Technology							
The Arts							
H&PE							
SOSE							
2006 (by VELS Domain)							
English							
Mathematics							
Science							
ICT							
The Arts							
H&PE							
Civics & Citizenship							
2005 Primary state benchmarks (by CSF KLA) (2006 benchmarks are not available at this stage)							
English	2	15	30	27	17	8	
Mathematics	2	19	32	29	14	5	
Science	3	19	40	24	10	5	
Technology	2	15	39	28	11	5	
The Arts	1	13	35	29	15	6	
H&PE	2	10	32	32	18	6	
SOSE	2	16	35	30	12	6	

Note: ¹ If schools provided percentages only, it is not possible to report the number of students assessed. In these cases, the total percentage (100) will be shown.

Teacher Assessment of Student Progress (PSD students)

School no: 5345
 School name: Heany Park Primary School

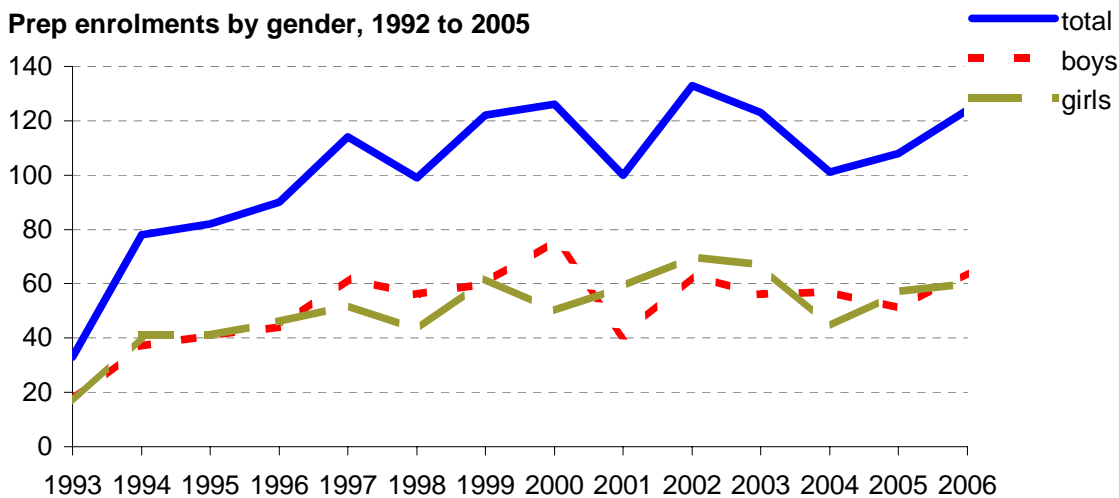
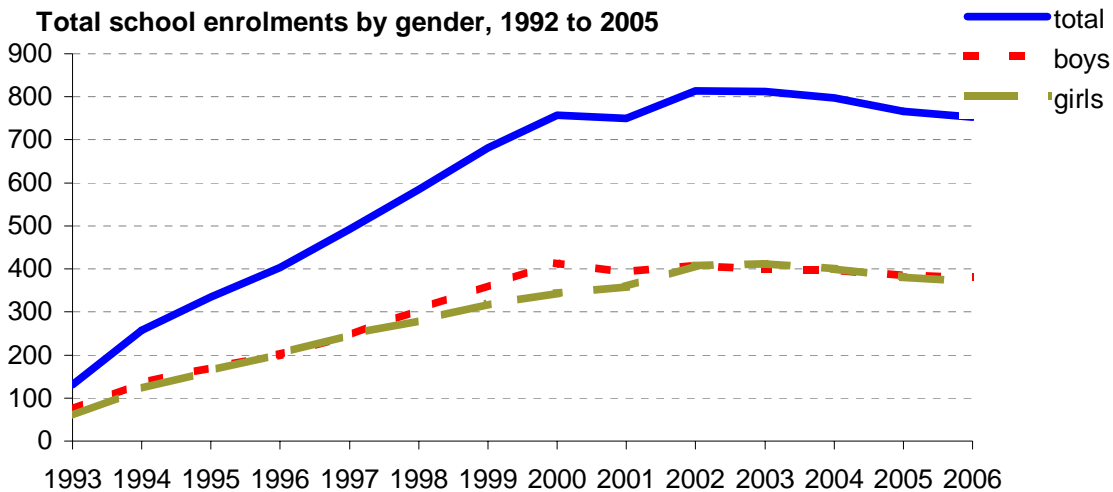


- 2002 (by CSF KLA)
- 2003 (by CSF KLA)
- 2004 (by CSF KLA)
- 2005 (by CSF KLA)
- 2006 (by VELS Domain)

Enrolments

School no: 5345
School name: Heany Park Primary School
Explanation: Enrolments at February census.
Source of data: February census.

Year	Total school enrolment			Prep enrolment			Year 7 enrolments		
	boys	girls	total	boys	girls	total	boys	girls	total
1993	73	58	131	17	16	33			
1994	135	122	257	37	41	78			
1995	171	164	335	41	41	82			
1996	200	203	403	44	46	90			
1997	246	247	493	62	52	114			
1998	306	279	585	56	43	99			
1999	362	319	681	60	62	122			
2000	413	344	757	76	50	126			
2001	392	358	750	41	59	100			
2002	407	407	814	63	70	133			
2003	400	412	812	56	67	123			
2004	397	400	797	57	44	101			
2005	385	381	766	51	57	108			
2006	381	372	753	64	60	124			



Student Absence

NEW - Student Absence by FTE student

School no: 5345

School name: Heany Park Primary School

Source of data: Data retrieved electronically from CASES21 at time of rollover.

Explanation: The average (mean) number of absent days* per student. Up to 2006, the formula used to calculate the average number of absent days per student was based on student headcount. From 2006, the formula will be based on FTE** students. The new formula will provide a more accurate summary of student absence. For 2006, student absence will be provided for both student headcount and FTE student. Note that 20 absent days equates to 1 absent day per fortnight, and 10 absent days to 1 absent day per month.

Student Absence (by student headcount)

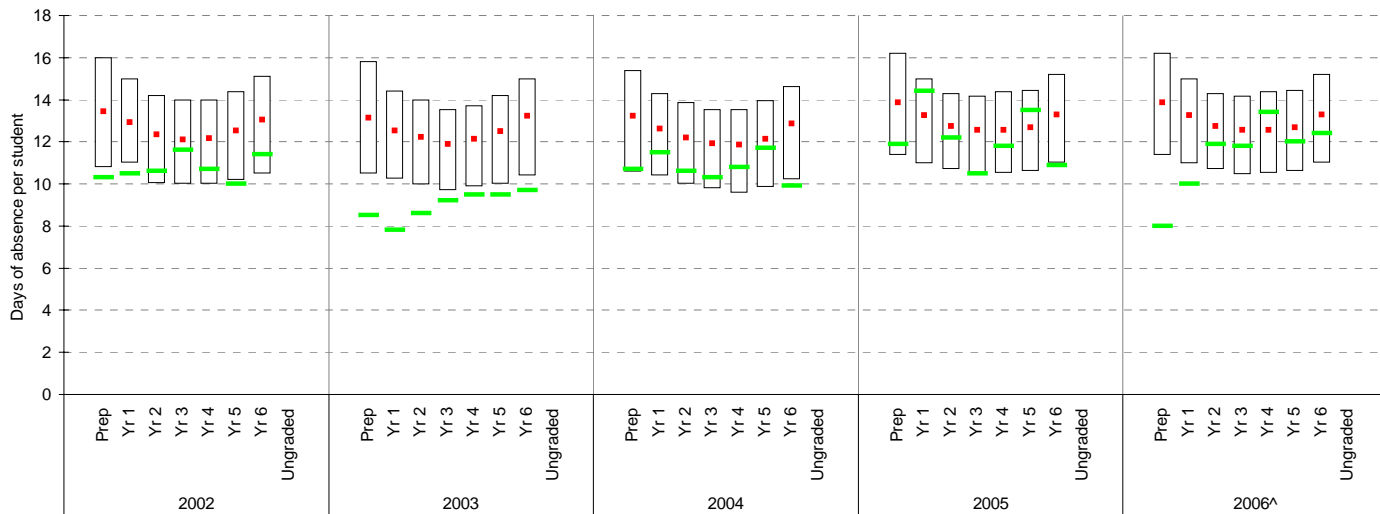
	School										2005 state benchmark^		
	2002		2003		2004		2005		2006		25th ptile	Mean	75th ptile
	Enrolments	Avg absent days / student	Enrolments	Avg absent days / student	Enrolments	Avg absent days / student	Enrolments	Avg absent days / student	Enrolments	Avg absent days / student			
Prep	133	10.3	123	8.5	110	10.7	109	11.9	15	8	11.4	13.9	16.2
Yr 1	105	10.5	136	7.8	125	11.5	104	14.4	118	10	11	13.3	15
Yr 2	128	10.6	100	8.6	135	10.6	120	12.2	111	11.9	10.7	12.8	14.3
Yr 3	113	11.6	129	9.2	108	10.3	130	10.5	109	11.8	10.5	12.6	14.2
Yr 4	103	10.7	106	9.5	127	10.8	100	11.8	113	13.4	10.5	12.6	14.4
Yr 5	127	10	111	9.5	109	11.7	117	13.5	120	12	10.6	12.7	14.4
Yr 6	105	11.4	123	9.7	110	9.9	103	10.9	199	12.4	11	13.3	15.2
Ungraded													
P-6 mean		10.7		8.9		10.8		12.1		11.9		13	

Legend:
 State 75th percentile
■ State mean
 School
 State 25th percentile

Student Absence (by FTE** student)

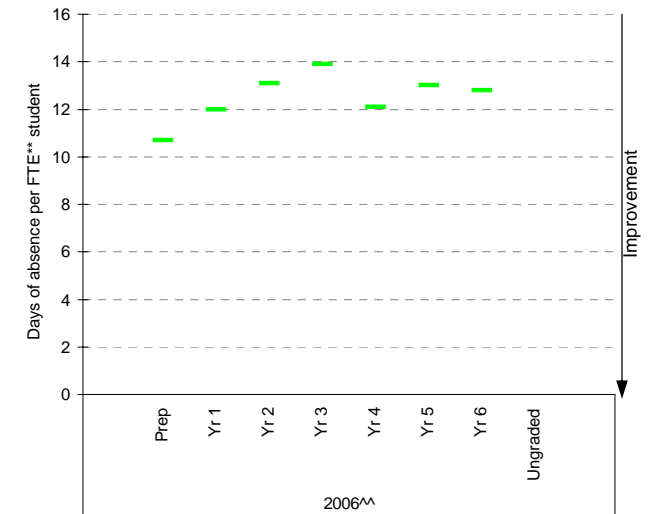
	School 2006		2006 state benchmark^^		
	Enrolments	Avg absent days / FTE** student	25th ptile	Mean	75th ptile
Prep	120.2	10.7			
Yr 1	103.7	12			
Yr 2	100.5	13.1			
Yr 3	106.7	13.9			
Yr 4	119.5	12.1			
Yr 5	91.7	13			
Yr 6	105.8	12.8			
Ungraded					
P-6 mean		12.5			

Student absence (by student headcount), school plotted against state benchmarks^, 2002 to 2006



Notes: * Includes curriculum absences only (absence codes 200, 201, 202, 203, 205, 206, 207, 208, 209, 210, 211, 300, 401, 500, 700, 800, 804, 805, 900).
 ^ 2006 benchmarks are not available at this stage. In the meantime, 2005 benchmarks are shown.

Student absence (by FTE** student), school plotted against state benchmarks^^, 2006



Notes: ** FTE = Full Time Equivalent (including part-time and part-year fractions).
 ^^ 2006 benchmarks are not available at this stage.

Parent Opinion

School no: 5345

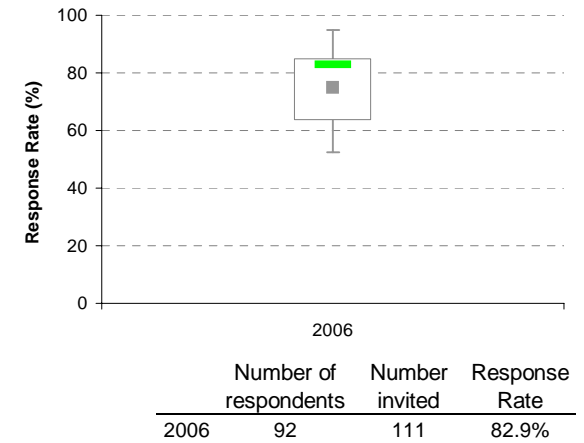
School name: Heany Park Primary School

Explanation: A self-completion questionnaire to obtain parents' opinions of the school. Parents rated a number of statements using a scale where 1=strongly disagree & 7=strongly agree. The statements were grouped into the following categories.

Source of data: Data scanned from questionnaires completed by parents.

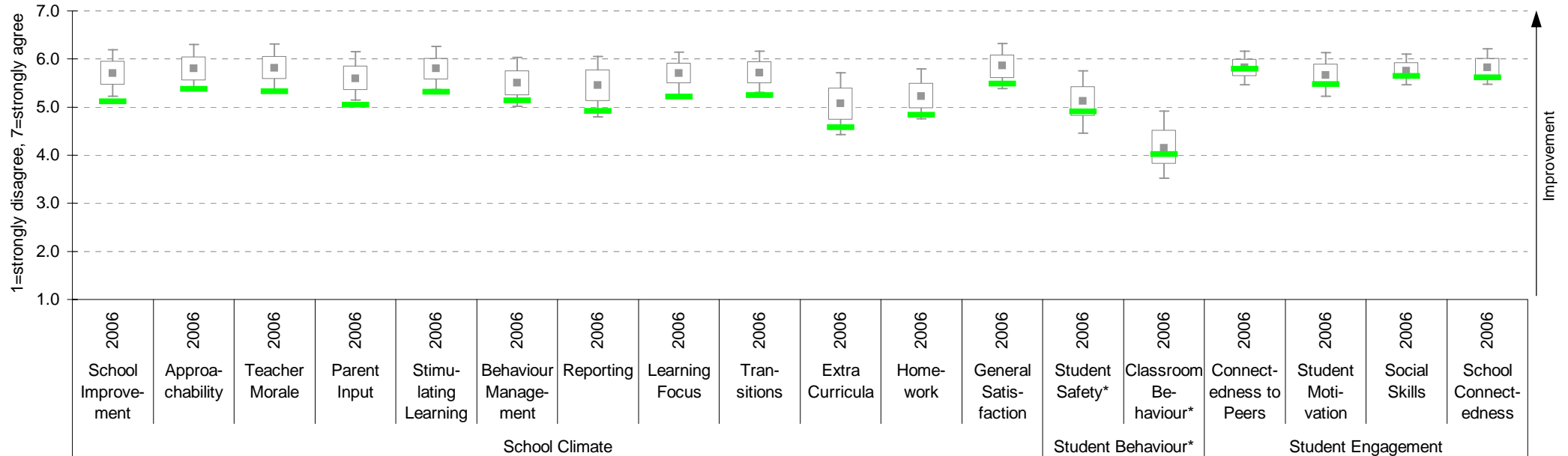
Variable	Year	School mean	State Primary median	Variable	Year	School mean	State Primary median
School Improvement	2006	5.12	5.71	Extra Curricula	2006	4.58	5.07
Approachability	2006	5.38	5.81	Homework	2006	4.84	5.23
Teacher Morale	2006	5.33	5.82	General Satisfaction	2006	5.48	5.87
Parent Input	2006	5.05	5.59	Student Safety*	2006	4.90	5.13
Stimulating Learning	2006	5.32	5.81	Classroom Behaviour*	2006	4.02	4.15
Behaviour Management	2006	5.13	5.51	Connectedness to Peers	2006	5.79	5.83
Reporting	2006	4.92	5.45	Student Motivation	2006	5.47	5.66
Learning Focus	2006	5.22	5.71	Social Skills	2006	5.64	5.76
Transitions	2006	5.25	5.72	School Connectedness	2006	5.62	5.83

School response rate against Primary school distribution



Legend:
 State 90th percentile
 State 75th percentile
 State Median
 State 25th percentile
 School
 State 10th percentile

Parent Opinion, school plotted on state Primary benchmarks 2006



Notes: ^ Benchmarks available for Primary, Secondary, Pri/Sec, Special and SDS schools.

* Parents' responses to all negatively phrased questions have been reversed for reporting purposes. Across all variables, the higher the score or percentile rank, the more positive parents' perceptions.

Staff Opinion

School no: 5345

School name: Heany Park Primary School

Explanation: A self-completion questionnaire to obtain the staff's opinions of the school. The survey was administered online using the School Organisational Health Questionnaire.

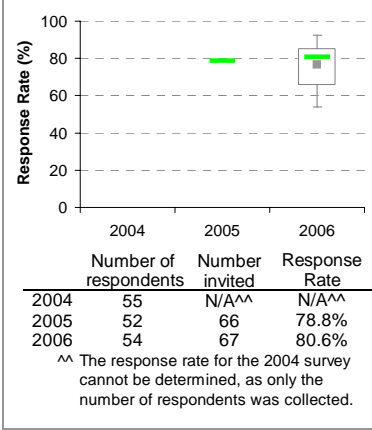
Source of data: Data transmitted from school staff to DoE via an online survey application.

Variable			
No.	Name	Year	School mean / State Primary median
1	Individual Morale	2004	67.7 / 73.7
		2005	66.4 / 75.5
		2006	70.2 / 75.6
2	School Morale	2004	65.2 / 76.1
		2005	65.2 / 77.6
		2006	69.4 / 78.1
3	Supportive Leadership	2004	68.3 / 78.6
		2005	69.7 / 80.0
		2006	69.0 / 80.0
4	Role Clarity	2004	76.4 / 78.3
		2005	71.8 / 79.2
		2006	71.6 / 79.6
5	Professional Interaction	2004	72.3 / 79.3
		2005	69.7 / 80.5
		2006	72.0 / 80.7
6	Participative Decision-Making	2004	71.0 / 73.2
		2005	69.9 / 74.8
		2006	68.6 / 75.1
7	Goal Congruence	2004	77.8 / 80.0
		2005	75.1 / 81.4
		2006	76.3 / 81.7

Variable			
No.	Name	Year	School mean / State Primary median
8	Appraisal & Recognition	2004	64.8 / 69.8
		2005	58.9 / 70.5
		2006	60.2 / 71.6
9	Professional Growth	2004	66.8 / 72.3
		2005	68.5 / 73.8
		2006	58.7 / 74.2
10	Curriculum Coordination	2004	71.4 / 74.5
		2005	70.5 / 74.6
		2006	74.7 / 75.0
11	Effective Discipline Policy	2004	79.1 / 77.6
		2005	73.4 / 79.7
		2006	74.2 / 79.9
12	Student Orientation	2004	86.0 / 85.0
		2005	80.8 / 85.9
		2006	80.7 / 86.1
13	Student Motivation	2004	76.0 / 75.0
		2005	71.4 / 75.9
		2006	74.9 / 76.8
14	Student Decision-Making	2004	67.6 / 66.2
		2005	64.5 / 68.4
		2006	66.8 / 69.4

Variable			
No.	Name	Year	School mean / State Primary median
15	Learning Environment	2004	75.1 / 78.6
		2005	74.3 / 80.3
		2006	77.1 / 81.3
16	Student Misbehaviour	2004	18.0 / 26.0
		2005	21.3 / 22.9
		2006	15.6 / 21.7
17	Classroom Misbehaviour	2004	12.4 / 15.0
		2005	16.4 / 14.6
		2006	11.0 / 13.8
18	Excessive Work Demands	2004	55.8 / 42.4
		2005	57.3 / 42.8
		2006	58.2 / 42.9
19	Individual Distress	2004	26.2 / 23.0
		2005	33.8 / 22.2
		2006	27.0 / 21.6
20	School Distress	2004	42.7 / 29.9
		2005	48.6 / 29.2
		2006	44.1 / 28.8

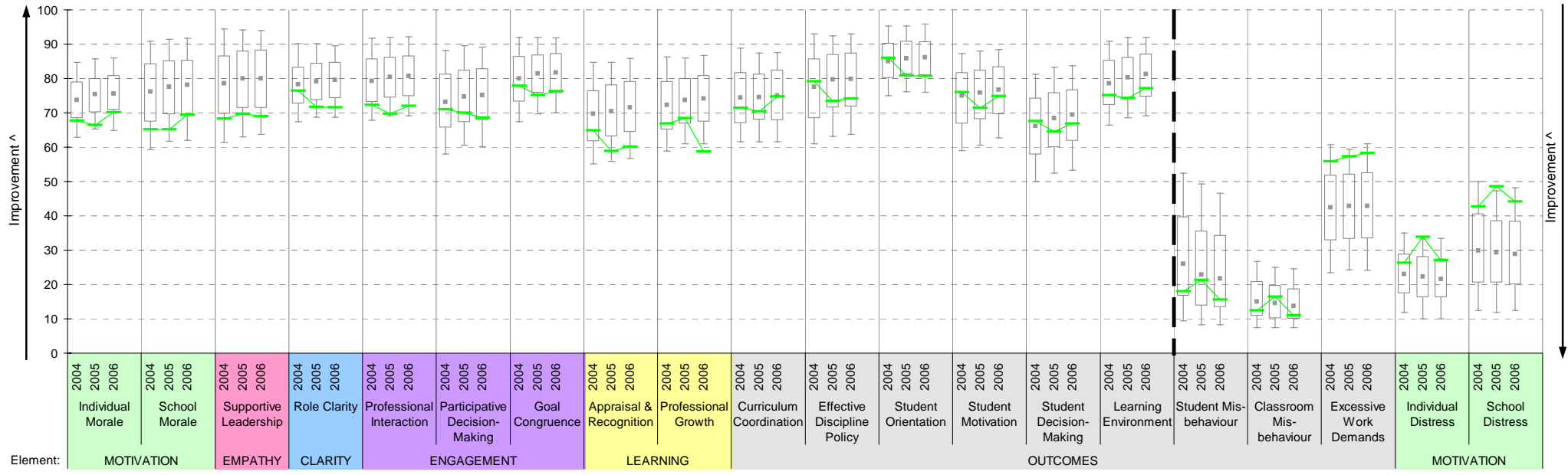
School response rate* against Primary school distribution



Notes:
 * If there were 6 or less respondents, table data is not shown for confidentiality reasons.
 If there were 3 or less respondents, graph data is not shown for confidentiality reasons.
 ^ The higher the school mean, the more positive the outcome for variables 1 to 15.
 The lower the school mean, the more positive the outcome for variables 16 to 20.

Legend:
 State 90th percentile
 State 75th percentile
 State Median
 State 25th percentile
 School
 State 10th percentile

Staff Opinion, school plotted on state Primary benchmarks 2004 to 2006



Staff Sick Leave

School no: 5345

School name: Heany Park Primary School

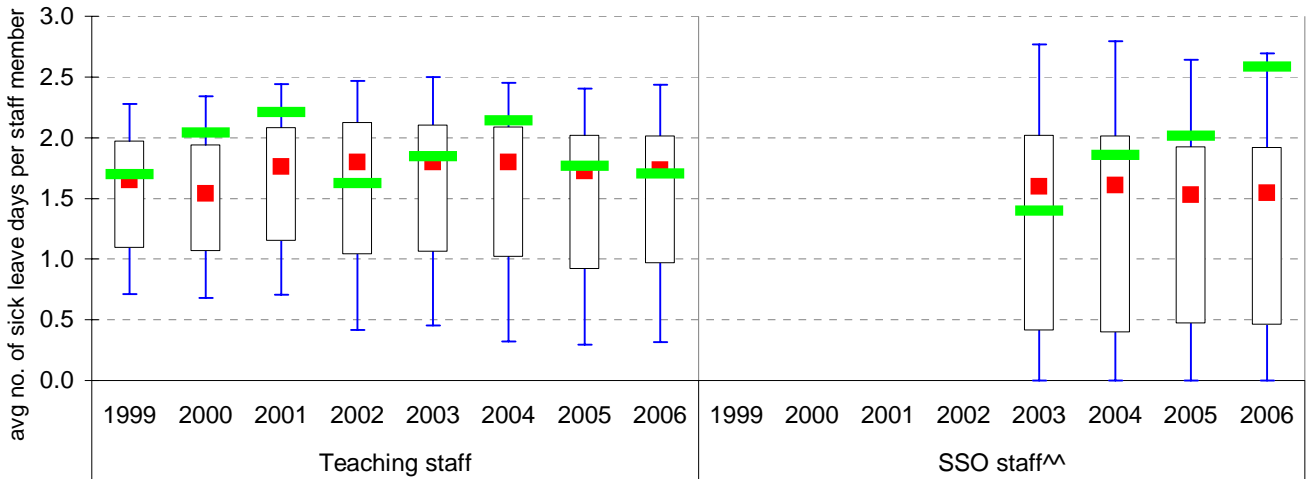
Explanation: The number of non-certificated and total sick leave days taken per staff member.
 A detailed explanation on how staff sick leave is calculated is provided in the Annual Reports Frequently Asked Questions page of the Standards website (<http://www.sofweb.vic.edu.au/standards/account/arepq.htm>).

Source of data: Human Resources Management System (HRMS)^.

Staff Type	Non-Certificated sick leave days per staff member^								2006 bmark mean
	1999	2000	2001	2002	2003	2004	2005	2006	
Teacher	1.70	2.04	2.21	1.62	1.85	2.14	1.77	1.70	1.73
SSO^^					1.40	1.86	2.01	2.59	1.54

Staff Type	Total sick leave days per staff member^								2006 bmark mean
	1999	2000	2001	2002	2003	2004	2005	2006	
Teacher	7.44	6.36	7.31	5.05	8.57	8.50	7.77	8.64	6.73
SSO^^					4.59	12.14	11.04	5.60	5.71

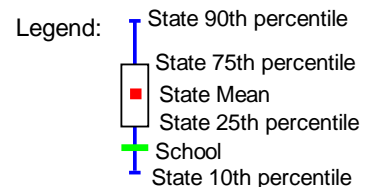
NON-CERTIFICATED sick leave, 1999 to 2006



TOTAL sick leave, 1999 to 2006



Note: ^ There may be some discrepancy between the results from CASES & those from HRMS. The latter are considered to be more accurate.
 ^^ Data for SSO (School Services Officer) staff is only available from 2003.



Teaching Staff Retention

School no: 5345

School name: Heany Park Primary School

Explanation: The retention rate of teaching staff is determined by matching staff payroll records for the last pay in June of one year (Year A), to the last pay in June of the following year (Year B).

Source of data: Human Resources Management System (HRMS).

Teaching Staff*

Year A	Year B	Number of Teaching Staff in Year A	Number of Teaching Staff retained in Year B	Teaching Staff Retention Rate	Statewide Average
2005	2006	53	48	91%	87%

Of the 53 teaching service staff at Heany Park Primary School at June 2005 (including those on leave without pay), 48 or 91% were still at the school at June 2006. This figure across all Government schools was 87%.

Ongoing Teaching Staff*^

Year A	Year B	Number of Ongoing Teaching Staff in Year A	Number of Ongoing Teaching Staff retained in Year B	Ongoing Teaching Staff Retention Rate	Statewide Average
2005	2006	44	41	93%	91%

Of the 44 ongoing teaching service staff at Heany Park Primary School at June 2005 (including those on leave without pay), 41 or 93% were still at the school at June 2006. This figure across all Government schools was 91%.

Note: * Teaching staff includes Principal class, Teacher class and Instructor class. Teaching staff employed as visiting teachers, guidance officers, curriculum consultants, etc. are excluded as they are not charged to a particular school.

^ Not including fixed term staff, except for where staff had changed from ongoing in Year A to fixed term in Year B.

Bank Balances

School no: 5345

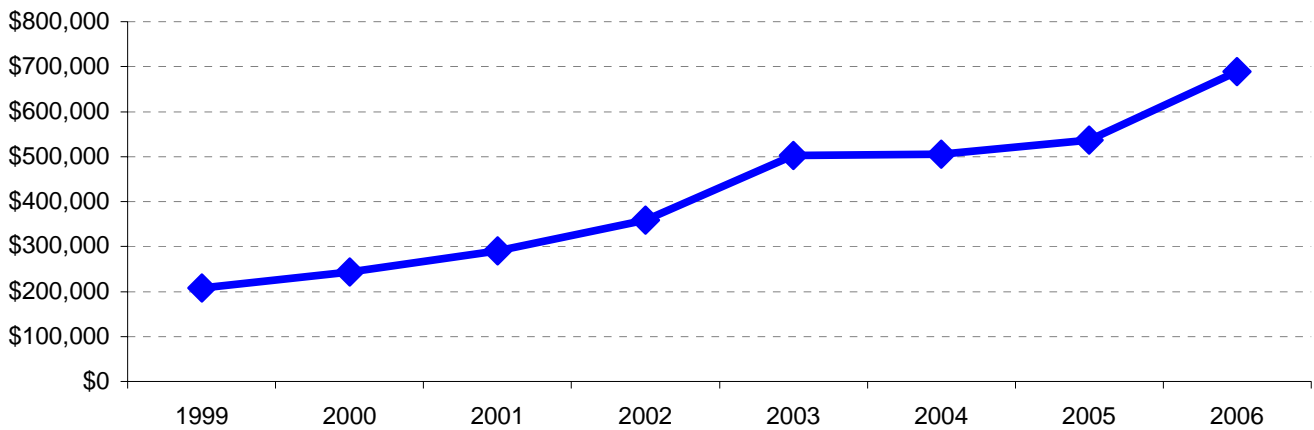
School name: Heany Park Primary School

Explanation: Account balance figures include official and investment accounts, and are calculated by taking the opening balance at 1st January plus the total receipts at 31st December less total payments at 31st December.

Account Balances (Official plus Investment Accounts)

1999	\$207,930	2003	\$502,228
2000	\$243,926	2004	\$505,755
2001	\$289,742	2005	\$536,796
2002	\$359,279	2006	\$688,947

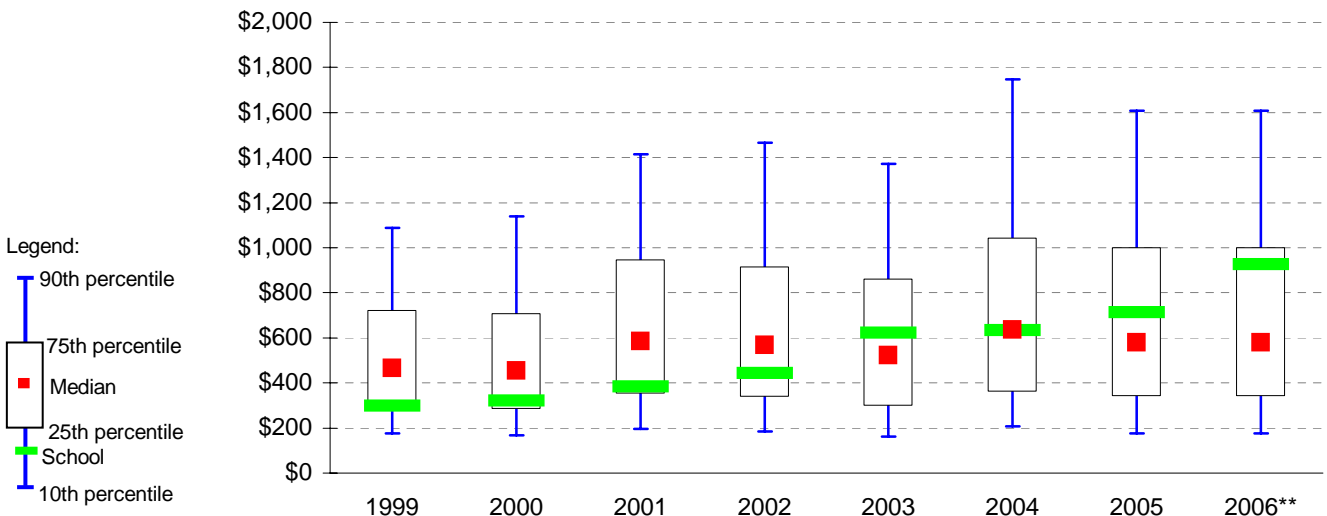
Account Balances, 1999 to 2006



Account Balances (Official plus Investment Accounts) per student[^]

1999	\$298	2003	\$622
2000	\$320	2004	\$633
2001	\$384	2005	\$713
2002	\$443	2006	\$925

School account balances per student enrolled in August census plotted on state Primary benchmarks*, 1999 to 2006



Notes:

[^] The account balance per student has been calculated to enable some comparison to be made between schools.

* Benchmarks for primary, secondary, pri/sec, SDS, special and language schools.

** 2006 benchmarks are not available at this stage. In the meantime, 2005 benchmarks are shown.